

TOTAL

One-Stop Tools Station

TOTAL

AUTOMATIC AIR COMPRESSOR

TTAC1601



CE



DV12V 160PSI

Security instructions



Caution

Please read the operating instructions carefully and observe the notes provided. Save the instructions for future reference.



Use the instructions to familiarize yourself with the product, its proper use and the safety notes. Safe operation of this machine is only possible when the operating or safety information is fully read and the instructions contained therein are strictly followed.

For safety reasons, children under 16 years of age, as well as persons who are not familiar with these operating instructions, must not use the pressure sprayer.

1) Security Advance Warnings

- a. Keep work area clean and well lit. Dark and dirty areas can cause accidents.
- b. Do not use the compressor in explosive atmospheres, such as in the presence of flammable liquids, gases, or dust. Power tools create sparks that can ignite dust or fumes.
- c. Do not expose the compressor to rain or wet conditions. Water entering the compressor will increase the risk of damage.
- d. Never use the device when you are distracted or do not feel well.
- e. Stay alert, watch what you are doing and use common sense when using a power tool.
- f. Never leave the compressor unattended while it is in use.
- g. Make sure before starting, lifting or carrying the tool that the ON/OFF switch is off when connecting to the power source. Avoid unintentional startup.
- h. The compressor and hoses can become very hot during operation. Touching them can cause burns.
- i. The use of personal protective equipment such as gloves or eye and hearing protection is recommended.
- j. Do not inflate any object to more than the intended pressure.
- k. Always check the compressor before using it. If it is damaged or worn, do not use it.

2) Operation

- a. The plug must match the outlet.
- b. Do not use the air compressor if the switch does not work.
- c. Never use the appliance for purposes other than those for which it was designed.
- d. Do not exceed the allowable output range of the compressor. Do not inflate large tires such as trucks, tractors and the like.
- e. Avoid using the compressor at temperatures below +5 degrees.
- f. The appliance vibrates during operation. Therefore, place it in a safe position.
- g. When removing the quick coupler, always hold the hose coupling firmly to avoid injury from the hose coming off under pressure.
- h. Keep cord away from heat, oil, sharp edges, and moving parts. Do not use if cord is worn or damaged.

- i. The appliance may overheat if it is used continuously for more than 10 minutes. Switch off the appliance immediately and let it cool down for at least 10 minutes.

3) Storage and maintenance

- a. Disconnect tool plug from power source before making any adjustments, changing accessories, or storing power tools. These preventive safety measures reduce the risk of the power tool being accidentally started.
- b. Store the compressor out of the reach of children and do not allow anyone unfamiliar with the compressor or these instructions to use it.
- c. Cleaning and maintenance tasks by the user may not be carried out by unauthorized persons.
- d. Do not carry the appliance by the power cord and never hang it from the power cord.

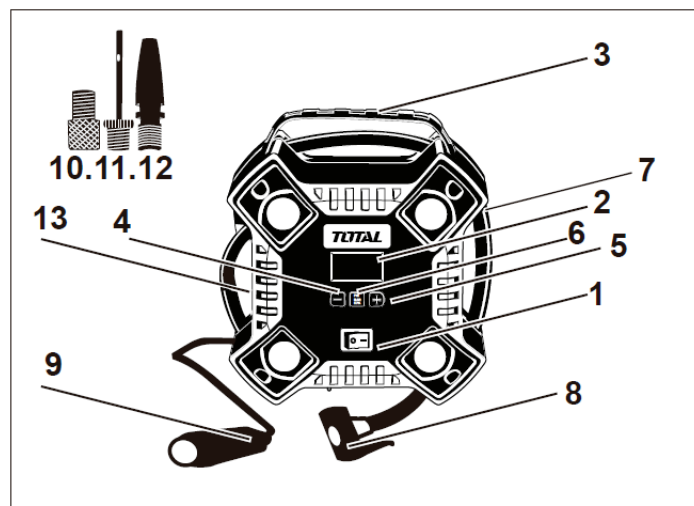
Technical data

Data sheet	
Voltage	12V-DC
Rated current	10A
Power	100W
Flow	35L/Min
Max. Pressure	160PSI
Sound pressure	<75.2dB(A)
Sound power	<95.2dB(A)

Note: Due to the continuous program of R&D&I, this document is subject to change without notice.

Product description

1. Main ON/OFF switch
2. LCD screen
3. Handle
4. Button -
5. + button
6. Unit change button
7. compressed air hose
8. Inflator / Quick Coupler
9. 12 Vdc car charger
10. Universal valve adapter
11. Ball pump adapter
12. inflatable adapter
13. Led light

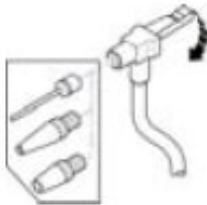


Note: Your analog compressor is designed for use with the standard 12V DC plug on most vehicles to inflate tires, balls, etc. of cars and bicycles. This product is designed for home and consumer use only.

Start up

Mounting of accessories

Your inflator is supplied with the standard cone nozzles and the needle inflator nozzle, which are located on the bottom of the unit. Remove the necessary accessories from the accessory compartment.



- To use the accessory you need, make sure the inflator lever is in the up position as shown in the picture.
- Place the adapter or accessory on the stem of the inflation needle or the conical nozzle.
- Push the quick coupler or inflator lever down to lock it in place.
- Attach the corresponding adapter to the item to be inflated:

LCD screen

Warning



Do not use the inflator when the car engine is running. Make sure your 12-volt accessory outlet is live. On some vehicles, the accessory socket can only be activated when the ignition key is in the accessory position.

To power the display with the 12 VdC adapter, simply plug the 12 VdC car charger (9) into the vehicle's 12 V accessory socket.

Quick start

Do not leave the inflator running unattended. It can burst car tires and other items.

To use your inflator immediately, you can do so without setting the auto-off feature.

- Before use, check the manufacturers recommended tire pressures for the vehicle or item to be inflated.
- Plug the 12 VdC car charger (9) into the vehicle's accessory socket (cigarette lighter). The LCD screen will turn on.
- To switch between the different units (PSI, BAR or KPA) press the unit switch button (6) until the required units are displayed.
- Attach the quick coupler (8) and an accessory, if needed, to the item to be inflated, making sure the lever on the coupler is in the down position to lock into place.

Note: Make sure the quick coupler is properly attached to the item to be inflated.

- To start the inflator, turn the main switch (1) to the on position.
- When the item is inflated as needed or to stop the inflator at any time, press the main switch (1) to the off position.

Auto shut-off pressure setting

Note: The LCD screen will only display inflation pressures when the inflator is in use.

- Press and hold the - and + buttons (4 and 5) for 3 seconds, the value will increase or decrease until the required value is obtained.
- After 3 seconds the display will flash and return to a reading of "0.0". This is normal.
- Attach the quick coupler (8) and accessories (10, 11, 12), if necessary, to the item to be inflated, making sure the quick coupler lever is in the down position to lock it in place.
- To start the inflator, turn the main switch (1) to the on position.

- When the item to be inflated has reached the preset value, the unit will automatically turn off.

Note: You may notice that the actual pressure reading may drop after a couple of seconds.

- To stop the inflator at any time, press the main switch (1) to the off position.
- Remove the quick coupler and/or accessory from the inflated item and the 12V charger connector (9) from your vehicle's accessory socket (cigarette lighter).

Note: If the main power switch is turned off, all settings will be lost and will need to be re-entered by following the instructions. This is a safety feature to prevent the risk of items being over-inflated.

Using the inflator as a pressure gauge

- Plug the 12Vdc vehicle connector into the vehicle's accessory socket. The LCD screen will turn on.
- Connect the quick coupling (8) to the element to be checked.
- The LCD display will show the pressure of the elements.
- After checking, return the air hose to storage.

Cleaning and storage

Cleaning



Attention

Always make sure the tool is turned off before adjusting or checking the function on the tool.

- Periodically clean the housing of the machine with a soft cloth, preferably after each use.
- Keep the ventilation slots free of dust and dirt.
- If the dirt does not come off, use a soft cloth dampened with soap and water. Never use solvents such as gasoline, alcohol, ammonia water, etc. These solvents can damage plastic parts.
- The machine does not require additional lubrication.

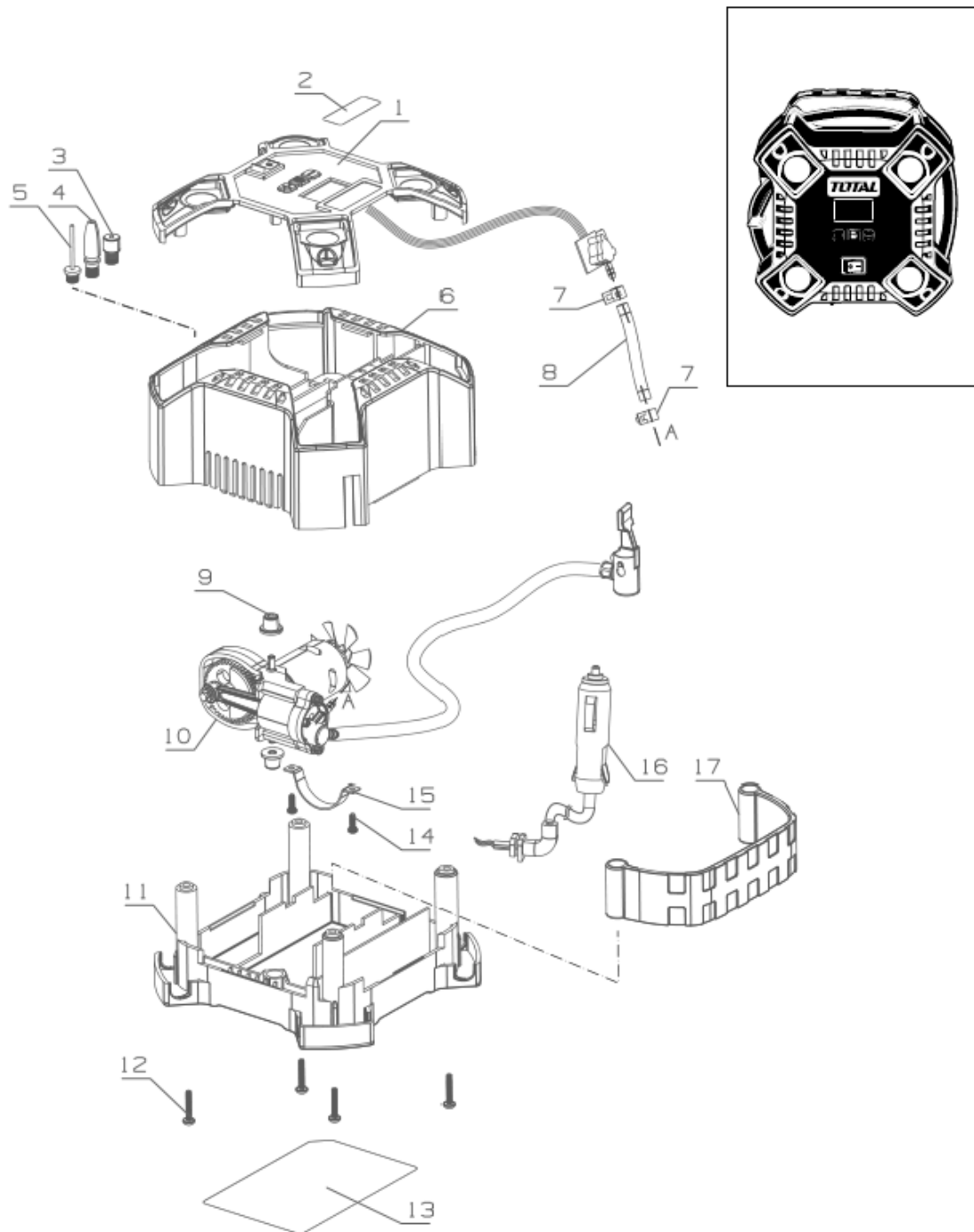
Note: The only user serviceable part is a 10 amp fuse located in the 12V connector, this can be checked by unscrewing the spring loaded center pin from the plug. Replace only with a fuse of identical rating.

Environment



- Do not dispose of electrical appliances as unsorted municipal waste, use separate collection facilities.
- Contact your local authority for information on available collection systems.
- If electrical appliances are disposed of in landfills, hazardous substances can seep into the groundwater and enter the food chain, harming your health and well-being.
- Recycle raw materials instead of disposing of them as waste.
- The machine, accessories and packaging must be sorted for environmentally friendly recycling.

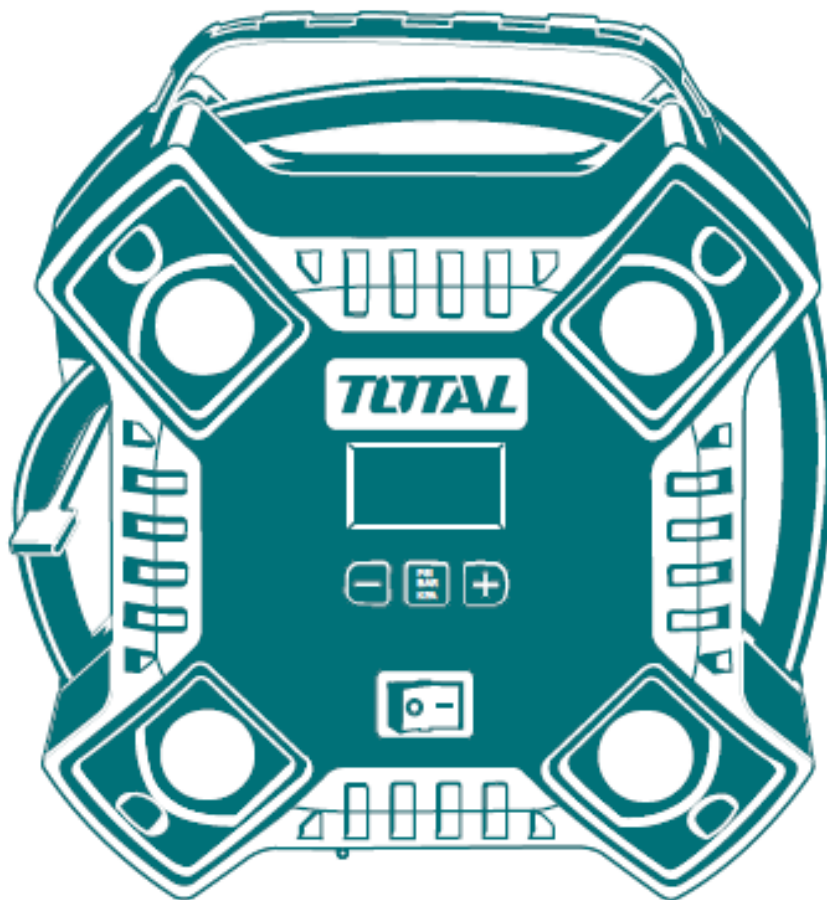
Exploded view



TOTAL

One-Stop Tools Station

TOTAL



AUTOMATIC AIR COMPRESSOR

DC12V 160PSI