

# TOTAL

One-Stop Tools Station

TOTAL

## PAINT GUN

TT3506

INDUSTRIAL



# 350W

# Security instructions



## Caution

Read all safety warnings and all instructions. Failure to follow all warnings and instructions may result in electrical shock, fire, and/or serious injury.

The term “power tool” in the warnings refers to your mains-operated (corded) power tool or battery-operated (cordless) power tool.

*Note: Save all warnings and instructions for future reference. Due to our ongoing R&D&I program, the specifications in this document are subject to change without notice.*

### 1) Work area safety

- a. Keep the work area clean and well lit to prevent accidents.
- b. Do not use power tools in explosive atmospheres, such as in the presence of flammable liquids, gases, or dust that can cause fires.
- c. Keep children and other unauthorized persons away while using a power tool. Distractions can cause you to lose control of the tool.

### 2) electrical safety

- a. Power tool plugs must match the outlet. Never modify the plug in any way. Using a suitable plug reduces the risk of electric shock.
- b. Avoid bodily contact with grounded surfaces such as pipes, radiators, ranges, and refrigerators. There is an increased risk of electric shock if your body is grounded.
- c. Do not expose power tools to rain or wet conditions. Water entering a power tool will increase the risk of electrical shock.
- d. Never use the cord to carry, pull or unplug the power tool. Keep the cable away from heat or oil.
- e. When using a power tool outdoors, use an extension cord suitable for outdoor use.
- f. If using the tool in a damp location is unavoidable, use a Residual Current Device (RCD) protected supply to reduce the risk of electric shock.

### 3) Personal security

- a. Always stay alert, watch what you are doing and use common sense when using the tool.
- b. Do not use a power tool if you are tired or under the influence of medication or other substances.
- c. Wear personal protective equipment. Always wear eye protection. Protective equipment such as a dust mask, non-slip safety shoes, hard hat, or hearing protection used in the proper conditions will reduce personal injury. Also don't wear loose clothing or jewelry.
- d. Prevent the tool from turning on unintentionally. Make sure the switch is in the off position before connecting to power source and moving.
- e. Remove any adjusting wrenches or wrenches before turning on the power tool. An adjustable wrench or wrench placed in a rotating part of the power tool can cause serious injury.
- f. If devices are used for dust extraction and collection, make sure they are properly connected. Properly use these devices and you will reduce dust-related hazards.

#### **4) Use and care of power tools**

- a. Do not force the tool. Use the correct power tool for each use.
- b. Do not use the power tool if its power switch does not work. Any power tool that cannot be controlled with the switch is dangerous and must be repaired.
- c. Disconnect the plug from the power source before making any adjustments, changing accessories, or storing the tool to avoid accidental starting.
- d. Use the power tool, accessories and bits etc. in accordance with these instructions, taking into account the working conditions and the work to be carried out. Using the power tool for operations other than those intended could result in a hazardous situation.
- e. Store power tools out of the reach of children and do not allow people unfamiliar with the tool to use it.
- f. Carry out regular maintenance on power tools. Check for misalignment or binding of moving parts, breakage of parts, and any other conditions that may affect the operation of power tools. If it is damaged, have the power tool repaired before using it. Many accidents are caused by poorly maintained power tools.
- g. Keep accessories clean and sharp, as with proper maintenance they are less likely to bind and are easier to control.

#### **5) Service**

- a. Have your power tool serviced by a qualified person and use replacement parts recommended by the manufacturer. This will ensure that the safety of the power tool is maintained.

## Safety rules for correct use



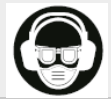
Double insulation for additional protection



Please read the instruction manual before use.



CE conformity.



Wear safety glasses, hearing protection and a dust mask.



Waste electrical products must not be disposed of with household waste. Please recycle at the appropriate facilities. Check with your local authority or retailer for recycling advice.



Security alert. Use only accessories supported by the manufacturer.

## Additional security warnings

- Do not use guns to spray flammable materials.
- Know the possible dangers that the material to be sprayed presents and consult the markings on the container or the information provided by the manufacturer of the material to be sprayed.
- Do not spray any material where the hazard is unknown.
- Wear proper personal protective equipment such as safety gloves, dust mask, and safety glasses.
- Do not clean the paint gun with flammable solvents.
- Do not use the tool for food, pharmacy or other purposes not mentioned in the manual.

## Other risks

Even when the power tool is used as prescribed, it is not possible to eliminate all residual risk factors:

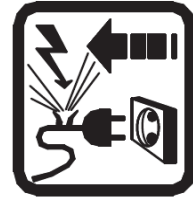
- a. Health defects resulting from vibration emission if the power tool is used for a longer period of time or if it is not managed and maintained properly.
- b. Injuries and property damage due to broken fixtures breaking suddenly.



### Caution

This power tool produces an electromagnetic field during operation. This field can, in some circumstances, interfere with active or passive medical implants.

To reduce the risk of serious injury, we recommend that persons with medical implants consult their physician before using this power tool.



If the cable is damaged or cut during work, do not touch the cable, immediately unplug the tool. Never use the machine with a damaged cable.

The machine must not be damp and must not be used in a humid environment.



### Attention

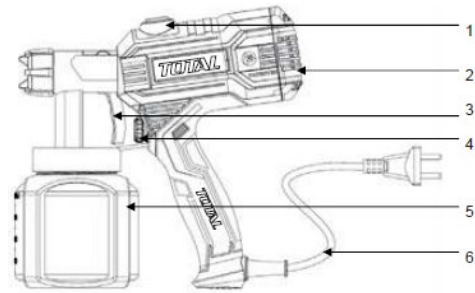
Safe operation of this machine is only possible when the operating or safety information is fully read and the instructions contained therein are strictly followed.

## Technical data

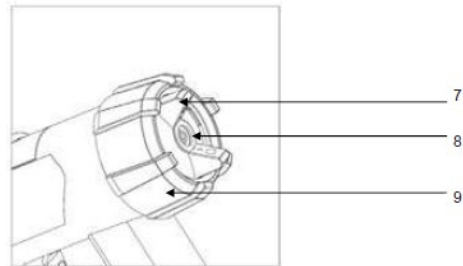
Data sheet	
<b>Voltage</b>	220-240V
<b>Frequency</b>	50/60Hz
<b>Power</b>	350W
<b>Maximum viscosity</b>	50din-s
<b>Max back air pressure</b>	0.1 – 0.2 bar
<b>Max airflow</b>	380ml/min
<b>Class</b>	II
<b>Power cord</b>	1.8m
<b>Sound pressure level</b>	LpA:77dB(A) KpA:3.0dB(A) LwA:90dB(A) KwA:3.0dB(A)
<b>vibration level</b>	<2.5m/s
<b>Reservoir capacity</b>	800ml
<b>Nozzle size</b>	2.5mm
<b>Weight</b>	1.2kg

## Product description

1. ON/OFF switch
2. Air intake
3. Trigger
4. Flow regulator
5. Tank/Vessel
6. Power cord
7. Spray head
8. Mouthpiece
9. Union nut



*Note: Not all accessories illustrated or described need to be included in the standard delivery.*



The airflow generated by the motor fan flows into the paint gun. The air flow serves to atomize the coating material at the nozzle and to pressurize the container.

This pressure promotes the coating material through the riser tube to the nozzle. Air pressure and flow are adjustable.

## Set up

### Lining materials

Coating materials are solvent- and water-based paints, finishes, primers, two-component paints, varnishes, automotive finishes, stains, and wood preservatives.

### Preparation of the investment material

Before spraying, it may be necessary to thin the material being used with the appropriate thinner as specified by the material manufacturer. Never exceed the dilution advice given by the manufacturer.

### Goo

**Viscosity = thickness of liquid coating material**

- Shake spray material well before measuring viscosity.
- Immerse the viscosity cup completely in the spray material.
- Then hold the viscosity cup up and measure the time in seconds until the liquid is emptied. This time is known as the completion time.



Execution time required as follows:

<b>Viscosity table</b> <b>Lining Material Viscosity DIN-s</b>	
Solvent-based paints	15-50
primers	25-50
pickling	undiluted
2 component paints	20-50
varnishes	15-40
water paints	20-40
car finishes	20-40
Wood Protection Center	undiluted

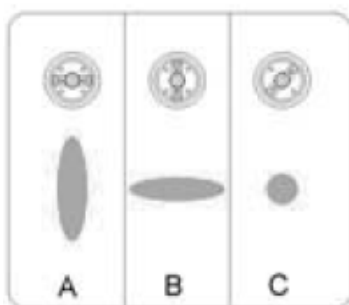
### Spray work with elevated objects

- Fill the container with the coating material. Tighten the thread of the gun.
- Connect the gun to the power supply, make sure the voltage corresponds to the nameplate.
- Turn on the unit. Adjust spray pattern, material adjustment amount, airflow and pressure.
- Press the trigger of the spray gun.

*Note: With the unit turned on the air cap flows in the air.*

### Spray Gun Adjustment

Selection of spray patterns



A = Spray vertically

For horizontal surfaces.

B = Spray horizontally

For vertical surfaces

C = Circular shape spray

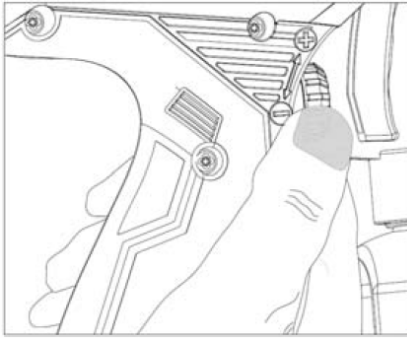
For corners, edges and others

### Setting the desired spray pattern

- The shape of the spray pattern is adjusted by turning the nozzle nut to the vertical, horizontal or diagonal position.
- To adjust the spray pattern, unscrew the union nut counterclockwise to remove it from the paint gun.
- Pull and rotate the spray head to the requested position.
- Screw the union nut back onto the paint gun.
- Try each pattern and use the pattern that is right for your application.

*Note: During adjustment of the spray head, never pull the trigger.*

## Flow Rate Adjustment



The volume of the material will be adjusted by turning the flow regulator screw.

+	Turn Right More Flow Rate
-	Turn left Lower flow rate

## Spray methods

The result of spraying depends fundamentally on how smooth and clean the surface is before spraying. Therefore, the surface must be pre-treated and free of dust.

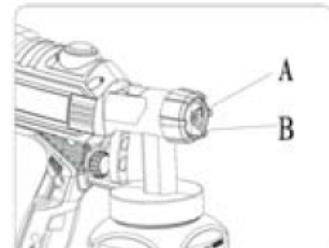
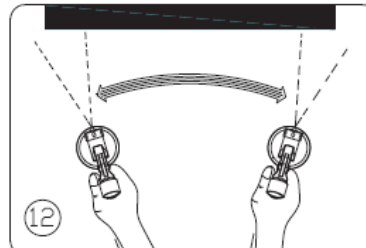
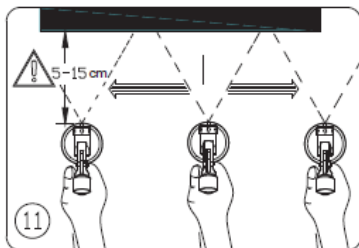
Those parts of the surface or object to be sprayed must be covered with an adhesive tape or newspaper so as not to be sprayed. Also cover screws or the like on the object being sprayed.

It is important to pre-work cardboard or a similar surface spray sample to find the correct spray gun setting.



## Attention

Make sure the surface to be painted is continuous and allows you to move safely. Avoid spray cuts in the intended path.



- Figure 11: Keep the spray gun necessarily at the same distance of about 5-15cm to the object being sprayed.
- Figure 12: Make multiple passes to get a better result.  
Move the spray gun evenly up or down, depending on the projection fan setting.

An even motion when painting will give you a better quality finish.

- Clean as coating material builds up on the nozzle and air cap (A and B) both parts with solvents or water.

## Work stoppages

- Power off the device.
- Place the spray gun on the spray gun holder.

## Cleaning

- Power off the device.
- Press the trigger so that the paint returns to the container.
- Unscrew the container.
- Empty the remaining paint.



- Clean containers and tubes with suitable cleaning tools.
- Wash the tank with water or the like.
- Tighten the tank.

*Note: Use only solvents with a flash point greater than 37.8°C.*

- Turn on the device and inject solvent or water into a container.

*Note: When a tube is not used, solvent or water is deposited in addition to the container. Therefore, the air accumulates in the current volume.*

- Repeat the above procedure if there is a clear solvent or water leak at the nozzle.
- Power off the device.
- Then empty the tank completely. Always keep the container seal free of paint residue and check for damage.
- Clean the outside of the gun and cup with a cloth soaked in solvent and water.
- Unscrew the nut, remove the air cap. Clean the air cap and nozzle with a brush and water or the like.

*Note: Never clean the spray gun nozzle or air holes with sharp metal objects.*

## Maintenance and troubleshooting

### Maintenance

Make sure the tool is unplugged from power before performing any maintenance.

- Keep the ventilation slots clean and free of obstructions. If possible, blow compressed air through the vents to remove internal dust (safety glasses should be worn when performing this process).
- Keep the outer casing of the tool clean and free of grease. Do not wash with water or use solvents or abrasives. Use only mild soap and a damp cloth to clean the tool.
- Never let liquid get inside the tool. Never immerse any part of the tool in liquid.
- Always store your power tool in a safe, dry place.

## Problem solving

Although your paint gun is actually very simple to use, if you experience problems, check the following:

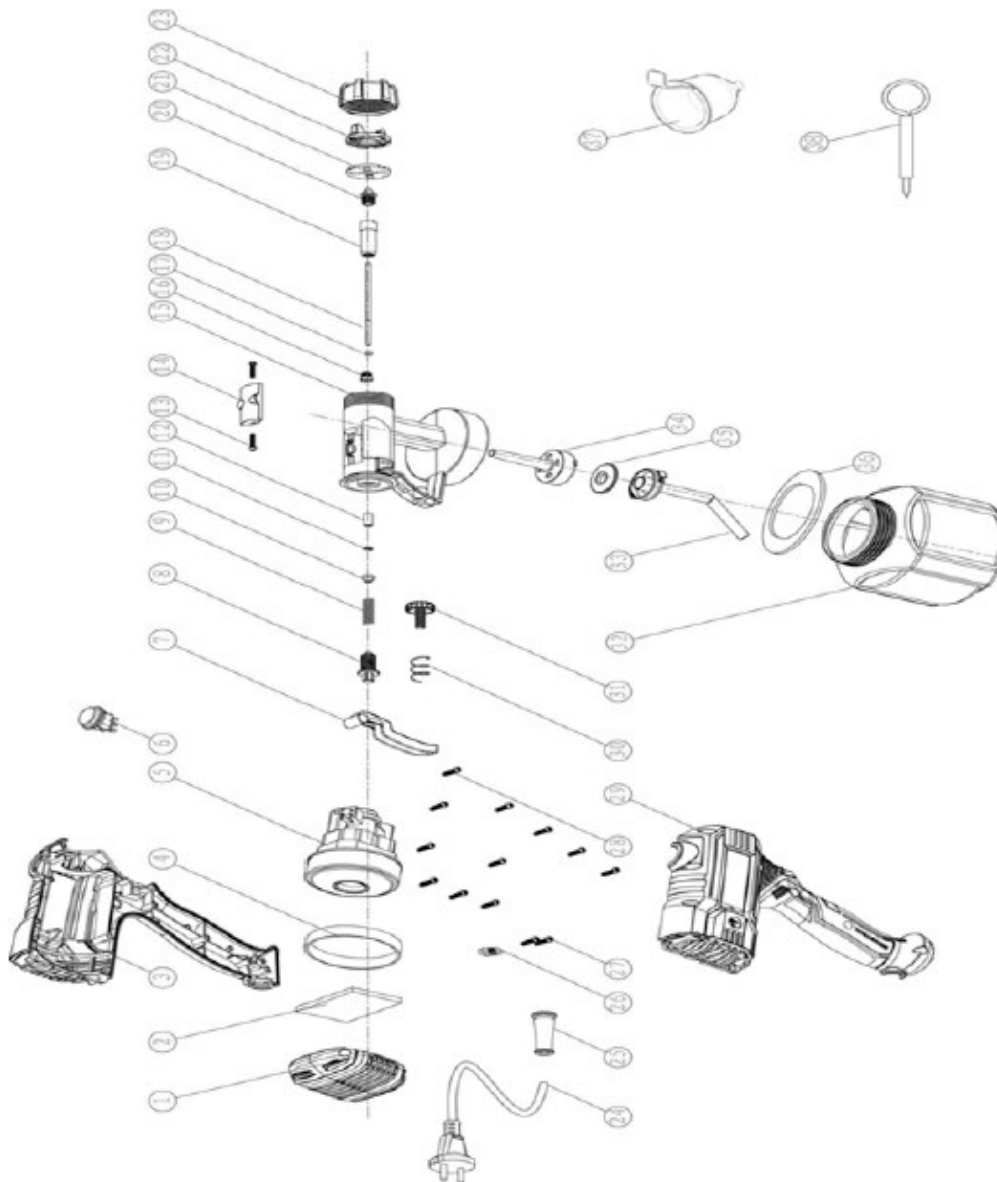
<b>Problem</b>	<b>Possible cause</b>	<b>Solution</b>
Paint does not come out	Clogged nozzle	Clean
	Clogged riser pipe	Clean
	Small clogged riser holes	Clean
	Flow amount low, flow regulator to the left (-)	Turn right (+)
	Airflow and pressure adjustment knob turned too far to the left (counterclockwise)	Right (clockwise)
	No pressure build up in the container	squeeze tank gun
The paint in the nozzle comes out drop by drop	loose nozzle	To squeeze
	worn nozzle	Replace
	Paint buildup on air cap and nozzle.	Clean
Coarse atomization	The paint is too sticky	Dilute the paint
	a lot of paint comes out	Set the flow regulator to the left (-)
	The flow regulator is turned too far to the right (+)	Turn left (-)
	The airflow and pressure adjustment knob is turned too far to the left (counterclockwise).	Knob to the right (clockwise)
	dirty nozzle	Clean
	Extremely dirty air filter	Replace
	Very little pressure build-up in the tank	squeeze the container
Impact spray jet (with air)	The lining material in the tank is low	Fill out
	Small holes in the riser tube clogged	Clean
	The air filter is very dirty	Replace
The paint runs on the surface	Too much coating material (paint) was applied	Check amount of paint
Too much fog paint	The distance to the object being sprayed is too great. Too much request for lining material.	Reduce spray distance

## Environment



- Do not dispose of electrical appliances as unsorted municipal waste, use separate collection facilities.
- Contact your local authority for information on available collection systems.
- If electrical appliances are disposed of in landfills, hazardous substances can seep into the groundwater and enter the food chain, harming your health and well-being.
- Recycle raw materials instead of disposing of them as waste.
- The machine, accessories and packaging must be sorted for environmentally friendly recycling.

## Exploded view



# TOTAL

One-Stop Tools Station

TOTAL



PAINT GUN

350W