

TOTAL

One-Stop Tools Station

TOTAL

BATTERY PRESSURE CLEANER

TPWLI20084



EN



20V

Security instructions



Caution

Read all safety warnings and all instructions. Failure to follow all warnings and instructions may result in electrical shock, fire, and/or serious injury.

The term “power tool” in the warnings refers to your mains-operated (corded) power tool or battery-operated (cordless) power tool.

Note: Save all warnings and instructions for future reference. Due to our ongoing R&D&I program, the specifications in this document are subject to change without notice.

1) Work area safety

- a. Keep the work area well lit to prevent accidents.
- b. Do not use power tools in explosive atmospheres, such as in the presence of flammable liquids, gases, or dust that can cause fires.
- c. Keep children and other unauthorized persons away while using a power tool. Distractions can cause you to lose control of the tool.

2) electrical safety

- a. Avoid bodily contact with grounded surfaces such as pipes, radiators, ranges, and refrigerators. There is an increased risk of electric shock if your body is grounded.
- b. Do not expose power tools to rain or wet conditions. Water entering a power tool will increase the risk of electrical shock.
- c. Never use the cable to carry, pull or unplug the charger. Keep the cable away from heat or oil.
- d. Before each use, check the tool for damage.

3) Personal security

- a. Always stay alert, watch what you are doing and use common sense when using the tool.
- b. Do not use a power tool if you are tired or under the influence of medication or other substances.
- c. Wear personal protective equipment. Always wear eye protection. Protective equipment such as a dust mask, non-slip safety shoes, hard hat, or hearing protection used in the proper conditions will reduce personal injury. Also don't wear loose clothing or jewelry.
- d. Prevent the tool from turning on unintentionally. Make sure the switch is in the off position before connecting to power source and moving.
- e. The tool must not be used by persons who are not trained or who are not familiar with the operating instructions. It should also not be used by children.
- f. Wear sturdy footwear to protect against electrical shock.

4) Use and care of the battery tool

- a. Recharge the battery only with the charger specified by the manufacturer. An unsuitable charger can create a fire hazard.
- b. Use power tools with specifically designated batteries. Use of other batteries may create a risk of injury or fire.
- c. When the batteries are not in use, keep it away from other metal objects, such as paper clips, coins, keys, nails, screws, or other small metal

objects, that can make a connection from one terminal to another. Shorting the battery terminals can cause burns or fire.

- d. Abusive conditions can cause expulsion of liquid from the battery; avoid contact. If accidentally contacted, rinse immediately with water. If the liquid comes into contact with the eyes, also seek medical help. Liquid expelled from the battery can cause irritation or burns.
- e. Do not use a battery or tool that is damaged or modified. They may exhibit unpredictable behavior resulting in fire, explosion, or risk of injury.
- f. Do not expose a battery or tool to fire or excessive heat. Exposure to fire or temperature above 130°C may cause an explosion.
- g. Follow all charging instructions. Do not charge the battery or tool outside the temperature range specified in the instructions. Improper charging or charging at temperatures outside the specified range may damage the battery or increase the risk of fire.
- h. In case of malfunction or defect during operation, the device should be immediately turned off and remove the battery.

5) Service

- a. Have your power tool serviced by a qualified person and use replacement parts recommended by the manufacturer. This will ensure that the safety of the power tool is maintained.

Other security rules

Specific safety instructions

- The indicated vibration emission value was measured in accordance with a standard test procedure and can be used to compare one power tool with another.
- The vibration emission value may differ during actual use of the power tool from the indicated value depending on how the power tool is used.
- Try to keep vibration exposure as low as possible. Examples of measures to reduce vibration exposure are wearing gloves when using the tool and limiting working hours. To do this, all parts of the operating cycle must be taken into account (for example, the times when the power tool is switched off and the times when it is switched on, but running without load).
- To prevent accidents and injuries, high pressure washers can be dangerous if not used correctly. The jet must not be directed at people, animals, live electrical equipment or the device itself.
- Do not direct the jet towards yourself or other people to clean clothes and shoes.
- To protect against splashing water or dirt, wear suitable protective clothing and safety glasses.
- Do not use the tool when others are in the vicinity unless they are also wearing protective clothing.
- Take adequate measures to keep children away from the equipment while it is in operation.
- Do not use the equipment near flammable liquids or gases. Failure to comply will result in a risk of fire or explosion.
- Do not spray combustible liquids. Risk of explosion.
- If you come into contact with cleaning agents, rinse with plenty of clean water.

- Do not run over, crush or bend the vacuum hose. There is a risk of damage and thus a risk of injury to you.
- Do not use it to clean windows.
- Store the equipment in a dry place and out of the reach of children.



Caution

To avoid equipment damage and any possible personal injury resulting from this:

- Do not work on damaged or incomplete equipment, or on equipment that has been converted without the manufacturer's approval. Before initial start-up, have a specialist check that the necessary electrical protection measures have been taken.
- Do not use the device if important parts such as suction hose, nozzles or spray lance are damaged.
- Protect the pressure washer from frost and dry running.
- High pressure hoses, accessories and couplings are important for the safety of the machine. Use only high-pressure hoses, fittings and couplings recommended by the manufacturer.
- Use only original accessories and do not make any alterations to the equipment.
- Always read and keep the instructions handy.

Additional Safety Rules - Chargers

- Before using charger, read all instructions, cautionary markings on charger and battery pack, and instructions for use of battery pack.
- Only charge your batteries indoors as the charger is designed for indoor use only.
- If the battery pack is cracked or otherwise damaged, do not insert it into the charger. There is danger of electric shock or electrocution.
- Do not allow any liquid to come into contact with the charger. There is danger of electric shock.
- The charger and the batteries supplied with it are specifically designed to work together. Do not try to charge the battery with any other charger than the one supplied.
- Do not pull the power cord to unplug it from the outlet.
- Do not use the charger if it has received a sharp blow, been dropped, or otherwise damaged. Take the charger to an official Total dealer for inspection.
- Do not disassemble the charger. Take it to an authorized service center when service or repair is required. Improper reassembly can result in a risk of fire, electric shock, or electrocution.
- To reduce the risk of electrical shock, unplug the charger from the power source before attempting to clean it. Removing the battery by itself does not reduce the risk.
- Disposal of unwanted batteries must be done under environmental regulations. Ask local authorities for more details.



Double insulation for additional protection.



Please read the instruction manual before use.



CE conformity.



Wear safety glasses, hearing protection and a mask.



Waste electrical products must not be disposed of with household waste. Please recycle at appropriate facilities. Check with your local authority or retailer for recycling advice.



Security alert. Use only accessories supported by the manufacturer.



The device is not suitable for connection to a drinking water supply system.



Battery charge only below 40°C.



Always recycle batteries.



Contains lithium ions.



Do not expose the battery to fire.



Do not expose the battery in the water.



Noise level specification Lwa to dB.



The device is not suitable for connection to a drinking water supply system.

Other risks

Even when the power tool is used as prescribed, it is not possible to eliminate all residual risk factors:

- Health defects resulting from vibration emission if the power tool is used for a longer period of time or if it is not managed and maintained properly.
- Injuries and property damage due to broken fixtures breaking suddenly.



Caution

This power tool produces an electromagnetic field during operation. This field can, in some circumstances, interfere with active or passive medical implants.

To reduce the risk of serious injury, we recommend that persons with medical implants consult their physician before using this power tool.

The machine must not be damp and must not be used in a humid environment.



Attention

Safe operation of this machine is only possible when the operating or safety information is fully read and the instructions contained therein are strictly followed.



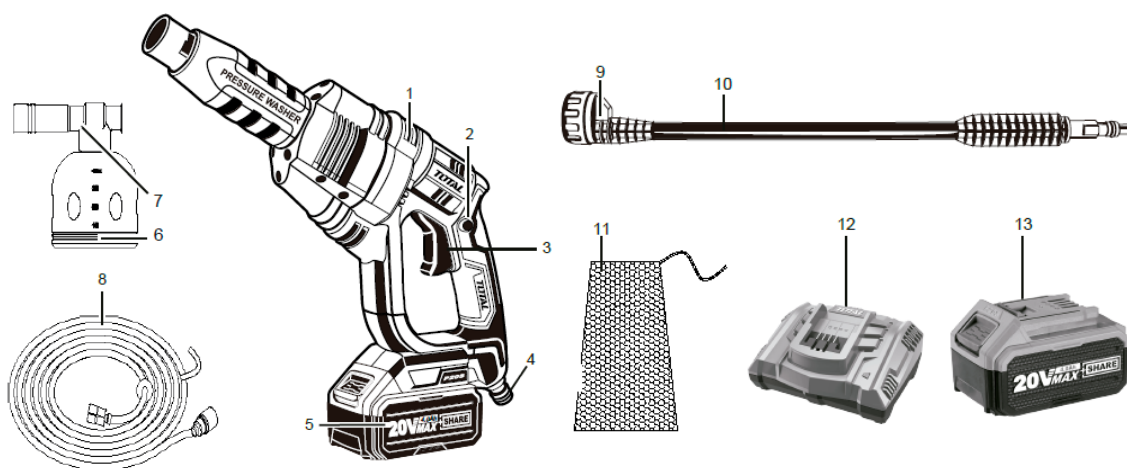
Technical data

Data sheet	
Voltage	20V
Weight (incl. accessories/soap)	2.6kg
Degree of protection	PX0
Work pressure	24.8 bar
max. intake pressure	0.5MPa
max. flow	2.2L/min
Min. suction lift	5m
No. of nozzles	6pcs
Water discharge time	≤10s
suction hose	6m
Soap tank volume	400ml

Product description

This device is suitable for cleaning and irrigation, so any other use that is not explicitly approved in this manual may result in damage to the equipment and represent a serious danger to the user.

The manufacturer is not responsible for damage caused by unspecified use or incorrect operation. The user is responsible for accidents or damage to other people or their property.



1. Ventilation slots
2. Release button
3. Trigger
4. Water connection
5. Battery
6. Cleaning detergent container
7. Detergent container nozzle

8. Water supply connection hose
9. Spray lance nozzle
10. Spray lance
11. Mesh bag for transport
12. Charger
13. Lithium-Ion Battery

Note: Not all accessories illustrated or described have to be included in the delivery.

Note 2: This product is specifically designed to work with Total's range of batteries and chargers.

Operation and commissioning

Unpack

Unpack carefully and check for completeness:

- pressure washer
- spray lance
- suction hose
- Mesh bag for transport
- Detergent nozzle and container

Start up



In accordance with current regulations, a pressure washer must never be operated outside the drinking water supply network without a controllable non-return valve. A suitable non-return device in accordance with EN 12729 type BA.

Water that has passed through a backflow prevention device is classified as non-potable. A non-return device is available in specialized stores.

A system separator (check valve) prevents backflow of water and detergent into the potable water line.

- Use a normal garden hose for the water intake and make sure it is long enough.
- Use the device in a domestic water connection with a maximum pressure of 5 bar.

- You can also use the device independently of the water pipe (eg with a rain barrel) through the integrated water suction function. This feature should only be used with a suction hose with a filter basket.

Water supply connection

Connection to the water connection (domestic)

- Connect the supply hose to the water supply.
- Purge the hose by allowing water to flow bubble-free out the other end of the supply hose.
- Close the tap.
- Connect the hose coupling of the supply hose to the water connection (4) of the pressure washer.

Integrated water suction

You can also use the device independently of the water pipe (eg with a container filled with water) through the integrated water suction function. This feature should only be used with a suction hose with a filter basket.



Attention

The device itself must not be immersed in open water sources. There is a risk of personal injury due to electric shock and material damage.

Do not suck water from natural accumulations. There is a risk of contamination from the backwash cleaning agent.

- Connect the suction hose with the water connection of the device.
- Insert the end with the filter basket into the water collector (for example, container with water). Make sure there is a sufficient and reliable water supply.

Purge hose

Make sure there is no air in the suction hose. Immerse the suction hose and spray lance (10) completely in the water trap (e.g. barrel) to purge it.

Note: Dry running will damage the device.

Inserting/removing the rechargeable battery

- To insert the battery (13) into the device, push the battery (13) along the guide rail into the device. You will hear it click into place.
- To remove the battery (13) from the device, press the battery release button and pull the battery (13).

Installing the spray lance/detergent nozzle

- Connect the spray lance (10) or detergent nozzle (7) to the high-pressure washer by inserting and tightening it.
- To remove them, turn the spray lance (10) or detergent nozzle (6/7) in the opposite direction.

Functioning

Remember that the pressure washer has a recoil force from the emitted water jet. Make sure you stand firmly and hold the gun securely, otherwise you may injure yourself or others.

Never use the machine with a water tap closed. Dry running will damage the pressure washer.

Switched on

- Only use the pressure washer after the water supply has been connected and the connection is tight.
- Press the release button (2) and then the switch or trigger lever (3). You can then release the release button (2).
- Releasing the trigger (3) turns off the device.

If there is a leak in the water system, turn off the device immediately and remove the battery. Risk of electric shock.

Try reconnecting the water (see “Start-up: Connecting the water supply”).

Finish the operation

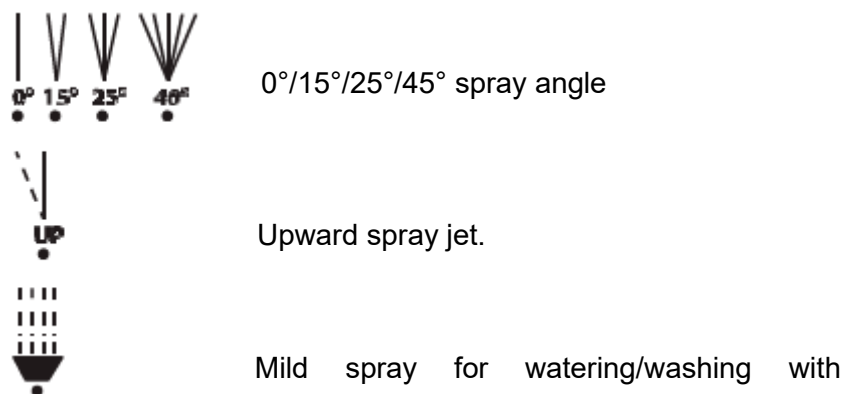
- After working with a detergent, rinse the machine with clean water.
- Release the pressure washer switch (3).
- Remove the battery from the device (13).
- Disconnect the machine from the water supply.
- Press the release button (2) and switch lever (3) to release existing pressure in the system.

Spray Lance Nozzle Configuration

Integrated nozzle with up to six types of spray. Six different nozzles can be used on the spray lance and can be changed by turning the nozzle attachment.

6 jets: 45°, 25°, 15°, 0°, inclined and irrigation mode (ideal for soaping).

A small arrow at the top of the spray lance indicates which nozzle is currently selected.



Use detergents

This device has been designed to be used with a neutral and biodegradable cleaning agent. Other detergents or chemical substances could impair the safety of the pressure washer and damage it. Such damage to the equipment is the responsibility of the user.

Problem solving

Problem/Failure	Possible cause	Solution
Strong pressure fluctuations	Lance nozzle (9) or hose nozzles (8) dirty or clogged	Rinse the nozzles (8/9) with water. If necessary, clean the nozzle hole with a needle.
The device does not work	The battery is discharged	Charge the rechargeable battery.
Leaks in the water system	Connections not installed correctly	Power off the device and remove the battery. Reconnect the device to the water supply.
	Connection pressure too high	Only connect the device to a drinking water connection with a maximum pressure of 5 bar.

Note: If they are not resolved after these checks, please contact an official Total dealer.

Maintenance

Remove the battery before doing any work on the device. This also includes connecting to the water supply or trying to eliminate leaks. There is a risk of electrocution or injury from moving parts.

Cleaning

Never direct the water jet against the machine, do not clean the pressure washer under running water. This could create the danger of electric shock and damage to the tool.

- Always keep the machine clean. Do not use detergents or solvents.
- Always keep the ventilation slots (1) clean and free.
- Clean the device with a soft brush or damp cloth.
- If the hose (8) or spray lance (9) nozzles are dirty or clogged, you can remove foreign bodies from the nozzle with a needle.
- Rinse nozzles with water to remove foreign matter.



Attention

When performing maintenance, use only original spare parts. The use of any other non-genuine spare parts may create a hazard or cause damage to the product.

Always wear eye protection with side shields marked to comply with regulations. Failure to do so could throw objects into your eyes and cause possible serious injury.

Maintenance

- Always remove the battery pack from your tool when assembling parts, making adjustments, cleaning, or when not in use.
- This tool does not require intensive maintenance like other types of tools; however, the ventilation slots must be kept clean. If the unit becomes defective, the repair must be carried out by an official dealer.
- Make sure your battery is always securely attached.
- Keep the battery clean and dry. Keep the charger in a dry room. Remove any traces of corrosion from the charging terminals.
- Avoid the use of solvents when cleaning plastic parts.

- Most plastics are susceptible to damage from various types of commercial solvents and can be damaged by their use. Use clean clothes to remove dirt, dust, oil, grease, etc.
- Always store your tool in a dry place.



Caveat

Do not at any time allow brake fluids, gasoline, petroleum-based products, penetrating oils, etc., to come into contact with plastic parts. Chemicals can damage, weaken, or destroy plastic, which can result in serious personal injury and property damage.

Storage

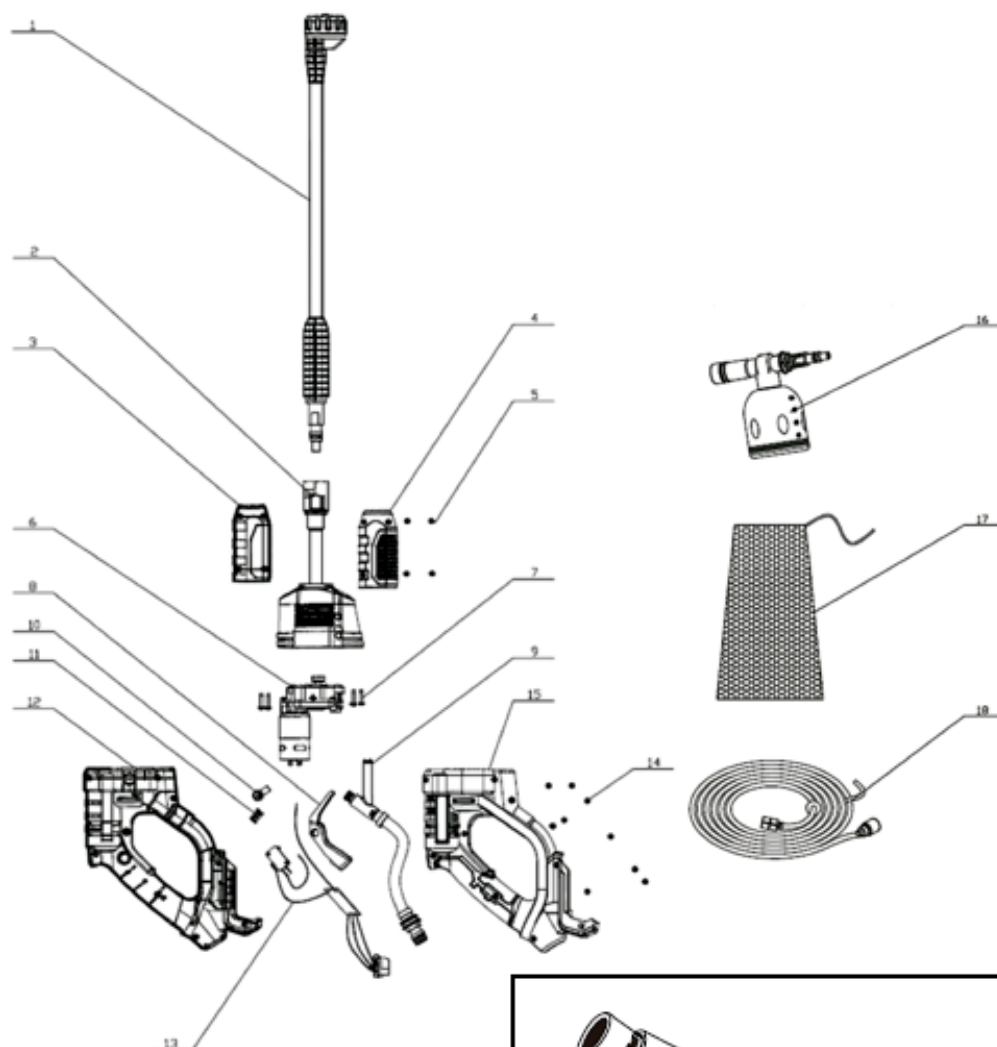
- Completely empty the water from the cordless pressure washer. Disconnect the machine from the water supply. Turn on the cordless pressure washer for a few seconds until no more water comes out of the spray lance (9). Power off the device.
- Store all spray lances (9) upright with the connection side down.
- Completely empty the suction hose and filter basket (8+10).
- The cordless high-pressure cleaner and accessories are damaged by frost if they are not completely emptied of water.
- Store the device and accessories in a frost-resistant place.

Environment



- Do not dispose of electrical appliances as unsorted municipal waste, use separate collection facilities.
- Contact your local authority for information on available collection systems.
- If electrical appliances are disposed of in landfills, hazardous substances can seep into the groundwater and enter the food chain, harming your health and well-being.
- Recycle raw materials instead of disposing of them as waste.
- The machine, accessories and packaging must be sorted for environmentally friendly recycling.

Exploded view



TOTAL

One-Stop Tools Station

TOTAL



BATTERY PRESSURE CLEANER

20V