

TOTAL

One-Stop Tools Station

TOTAL

ELECTRIC WOOD BRUSH

TL1108236



1050W

Security instructions



Caution

Read all safety warnings and all instructions. Failure to follow all warnings and instructions can result in electric shock, fire, and / or serious injury.

The term “power tool” in the warnings refers to your mains-operated (corded) power tool or battery-operated (cordless) power tool.

Note: Save all warnings and instructions for future reference.

1) Work area safety

- a. Keep the work area clean and well lit to avoid accidents.
- b. Do not use power tools in explosive atmospheres, such as in the presence of flammable liquids, gases, or dust that can cause fires.
- c. Keep children and other unauthorized persons away while using a power tool. Distractions can cause you to lose control of the tool.

2) Electrical safety

- a. Power tool plugs must match the outlet. Never modify the plug in any way. Using a proper plug reduces the risk of electric shock.
- b. Avoid body contact with grounded surfaces such as pipes, radiators, ranges, and refrigerators. There is an increased risk of electric shock if your body is grounded.
- c. Do not expose power tools to rain or wet conditions. Water entering a power tool will increase the risk of electric shock.
- d. Never use the cord to carry, pull, or unplug the power tool. Keep the cord away from heat or oil.
- e. When using a power tool outdoors, use an extension cord suitable for outdoor use.
- f. If it is unavoidable to use the tool in a humid location, use a residual current device (RCD) protected supply to reduce the risk of electric shock.

3) Personal security

- a. Always be alert, watch what you are doing, and use common sense when operating the tool.
- b. Do not use a power tool if you are tired or under the influence of drugs or other substances.
- c. Use personal protective equipment. Always wear eye protection. Protective equipment such as a dust mask, non-slip safety shoes, hard hat, or hearing protection used in the right conditions will reduce personal injury. Also, do not wear loose clothing or jewelry.
- d. Avoid accidentally turning the tool on. Make sure the switch is in the off position before connecting it to the power supply and moving it.
- e. Remove any adjusting key or wrench before turning on the power tool. A wrench or wrench attached to a rotating part of the power tool can cause serious injury.
- f. If dust extraction and collection devices are used, make sure they are properly connected. Use these devices properly and you will reduce dust hazards.

4) Use and care of power tools

- a. Do not force the tool. Use the right power tool for each use.
- b. Do not use the power tool if its ignition switch does not work. Any power tool that cannot be controlled with the switch is dangerous and must be repaired.
- c. Disconnect the plug from the power source before making any adjustments, changing accessories, or storing the tool to avoid accidental starting.
- d. Use the power tool, accessories and drill bits, etc. in accordance with these instructions, taking into account the working conditions and the work to be carried out. Using the power tool for operations other than those intended could result in a dangerous situation.
- e. Store power tools out of the reach of children and do not allow anyone unfamiliar with the tool to use it.
- f. Carry out regular maintenance on power tools. Check for misalignment or binding of moving parts, broken parts, and any other conditions that may affect the operation of power tools. If damaged, have power tool repaired before use. Many accidents are caused by poorly maintained power tools.
- g. Keep accessories clean and sharp, as with proper maintenance they are less likely to get stuck and are easier to control.

5) Service

- a. Have your power tool repaired by a qualified person and use replacement parts recommended by the manufacturer. This will ensure that the safety of the power tool is maintained.

Safety rules for correct use



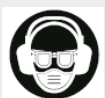
Double insulation for additional protection



Read the instruction manual before use.



CE conformity.



Wear safety glasses, hearing protection and a dust mask.



Waste electrical products must not be disposed of with household waste. Please recycle at the appropriate facilities. Check with your local authority or retailer for recycling advice.



Security alert. Use only accessories approved by the manufacturer.

Additional safety warnings

- Wait for the cutter to stop before leaving the tool.
An exposed rotary cutter can catch on the surface and cause possible loss of control and serious injury.
- Hold the power tool only by the insulated gripping surfaces, as the cutter may come into contact with its own cord.
Cutting a "live" wire can cause the exposed metal parts of the power tool to be "live" and could cause an electric shock to the operator.
- Use clamps or other practical way to secure and support the workpiece on a stable platform.
Holding the work by hand or against the body leaves it unstable and can lead to loss of control.

Other risks

Even when the power tool is used as prescribed, it is not possible to eliminate all residual risk factors:

- a. Health defects resulting from the emission of vibrations if the power tool is used for a longer period of time or if it is not properly managed and maintained.
- b. Injury and property damage from broken accessories suddenly breaking.



Caution

This power tool produces an electromagnetic field during operation. This field can, in some circumstances, interfere with active or passive medical implants.



To reduce the risk of serious injury, we recommend that individuals with medical implants consult their physician before using this power tool.

If the cord is damaged or cut during work, do not touch the cord, immediately unplug the tool. Never use the machine with a damaged cord.

The machine must not be damp and must not be used in a humid environment.



Attention

Safe working with this machine is only possible when the operating or safety information is fully read and the instructions contained therein are strictly followed.



Technical data

Data sheet	
Voltage	220-240V ~ 50 / 60Hz
Power	1050W
No-load speed	16000 / min
Planning depth	0-3mm
Planning width	82mm

Product description

- | | |
|------------------------------------|------------------------------|
| 1. Lock button for on / off switch | 9. V grooves |
| 2. Chip ejector | 10. Fixing bolt |
| 3. Depth adjustment knob | 11. Depth stop |
| 4. Brush depth scale | 12. Scale to reduce width |
| 5. On / off switch | 13. Parallel guide |
| 6. Cable | 14. Support for machine stop |
| 7. Belt cover | 15. strap |
| 8. Base plate | |



Note: Not all accessories illustrated or described have to be included in the standard delivery.

Set up

Assembly and adjustment

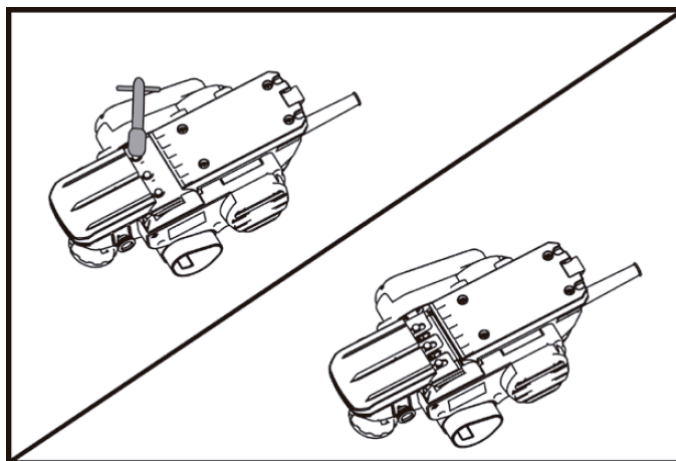
Changing the planer blades

Be careful when replacing the blades of the machine. Do not grip the blades by the cutting edges. This can lead to a risk of injury due to the sharp cutting edges of the blades.

Removing the blades

For removing the blades from the electric planer

- Rotate the blade drum until the clamping jaw is parallel to the base plate of the tool.
- Unscrew the bolts with the socket wrench and remove the clamp.
- Slide the planer base plate together with the blade out of the slot.



Mounting the blades

- Before reinserting new or sharpened blades, clean the drum, blades and, if necessary, the blade retainer. Clean the blades with alcohol or oil.
- Each brush blade must be assembled and aligned centered on the base plate.
- Next, tighten the three bolts with the socket wrench, ensuring the correct tightening sequence in the clamping jaw.

Note: Before using the brush, check that the fixing screws are properly seated. Rotate the blade head manually and make sure the blades of the wood planer do not rub.

Instructions for use

Brush depth adjustment

With the adjustment knob, the brushing depth can be adjusted variably by using the brushing depth scale.

Support for machine stop

The standstill support allows the machine to be positioned directly after operation, without the risk of damaging the work surface or the wood planer blade. During brushing, the support tilts upward, allowing full contact with the rear of the tool's base plate.

Start up

Attention



Observe the correct mains voltage. The voltage of the power supply must match the voltage specified on the nameplate of the machine.

On / off switch

- To turn on the machine:
 - Press and hold the on / off switch.
- To lock the on / off switch:
 - With the on / off button pressed, press the lock.
- To turn off the machine:
 - Release the on / off switch. If it is locked, briefly press the on / off switch and then release it.

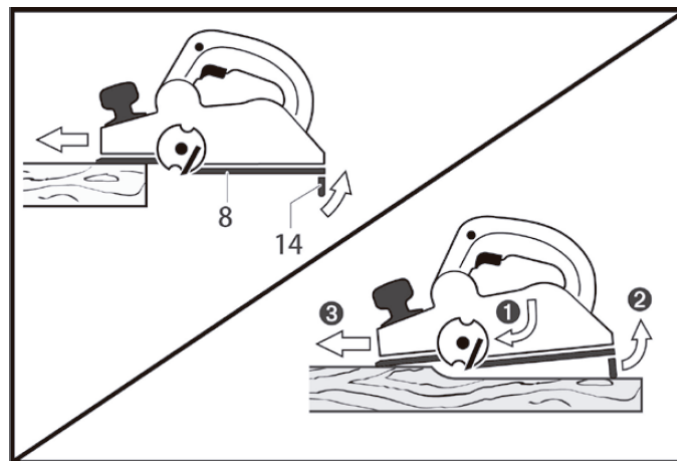
Note: For security reasons, the on / off switch cannot be locked; it must remain pressed during the entire operation.

Job tips

Brushed

- Set the required planning depth and place the front of the machine base plate against the workpiece.

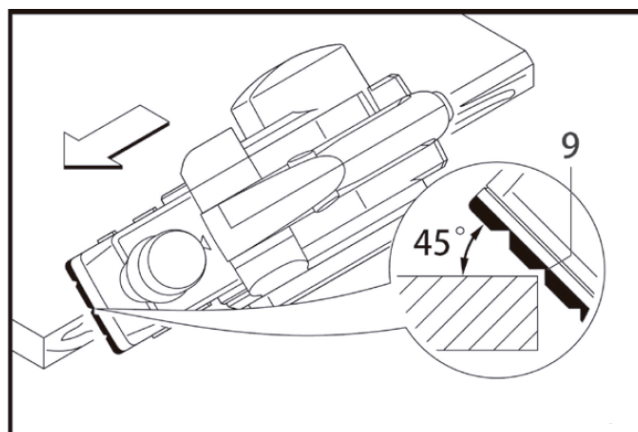
- Put the machine on the workpiece only when it is turned on. Otherwise, there is a danger of kickback when the cutting tool gets stuck in the workpiece.
- Start the machine and guide the machine evenly over the surface to be planed.
- For high-quality surfaces, work only with a low feed and apply pressure to the center of the base plate.
- When machining hard materials (for example, hardwood), as well as when using the maximum width of the machine, set only low planing depths and reduce planer advance as necessary.
- Excessive feed reduces the quality of planing results and can cause rapid clogging of the chip ejector.
- Only sharp blades achieve good cutting capacity and extend the life of the machine.
- The integrated standstill support also allows continuous brushing anywhere after an interruption:
With the parking support folded, position the machine at the location on the workpiece where planing will continue.



- Turn on the machine.
- Apply support pressure to the front of the tool base plate and slowly push the machine forward (1). This tilts the parking support up (2) so that the rear of the brush base plate faces the workpiece. again.
- Guide the machine on the surface to be planed (3) with even advance.

Beveled edges

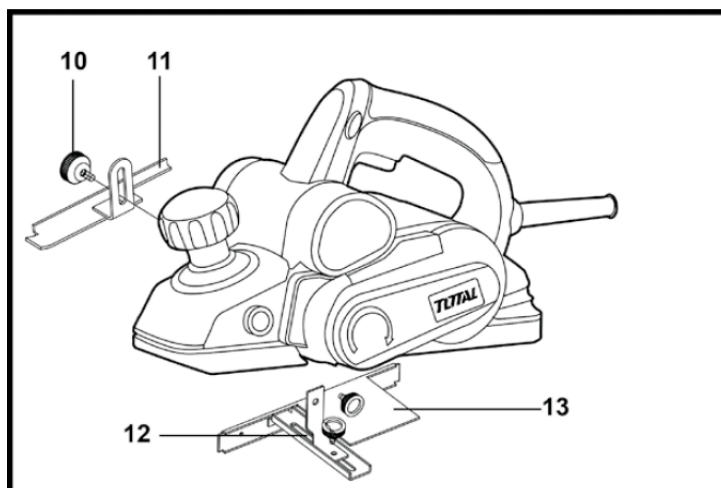
The V-grooves in the machine's base plate allow for quick and easy beveling of the edges of the workpiece.



Depending on the bevel width required, use the corresponding V-groove. To do this, place the brush with the V-groove on the edge of the workpiece and guide it along the edge.

Planning with parallel guide

- Mount the guide parallel to the machine using the fixing bolt. Depending on the application, mount the recess depth stop with attachment bolt to the machine.
- Loosen the set bolt and adjust the rebate width requested on the scale. Retighten the fixing bolt.
- Set the required rebate depth in accordance with the rebate depth stop. Perform the brushing procedure several times until the required recess depth is reached. Guide the tool by applying lateral support pressure.



Maintenance and troubleshooting

Maintenance

Your power tool has been designed to operate for a long time with minimal maintenance. Continued satisfactory operation depends as much on proper care and use of the tool as it is on periodic cleaning and maintenance.

Lubrication

Your power tool does not require additional lubrication.

Cleaning

Keep the ventilation slots clear and regularly wipe the case with a soft cloth.

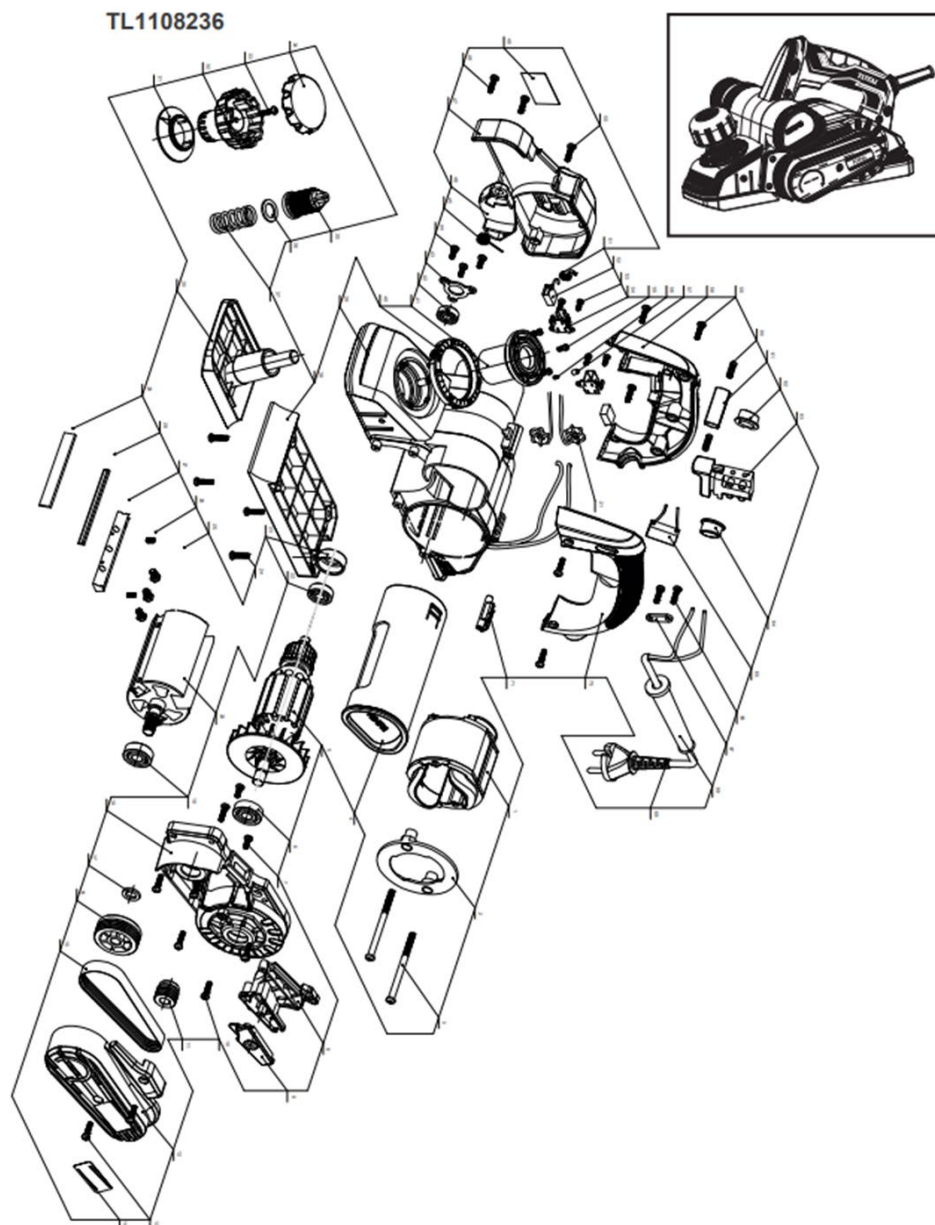
Note: Make sure the tool is unplugged before performing any maintenance.

Environment



- Do not dispose of electrical appliances as unsorted municipal waste, use separate collection facilities.
- Contact your local authority for information on available collection systems.
- If electrical appliances are disposed of in landfills, hazardous substances can seep into groundwater and enter the food chain, damaging your health and well-being.
- Recycle raw materials instead of disposing of them as waste.
- The machine, accessories and packaging must be classified for environmentally friendly recycling.

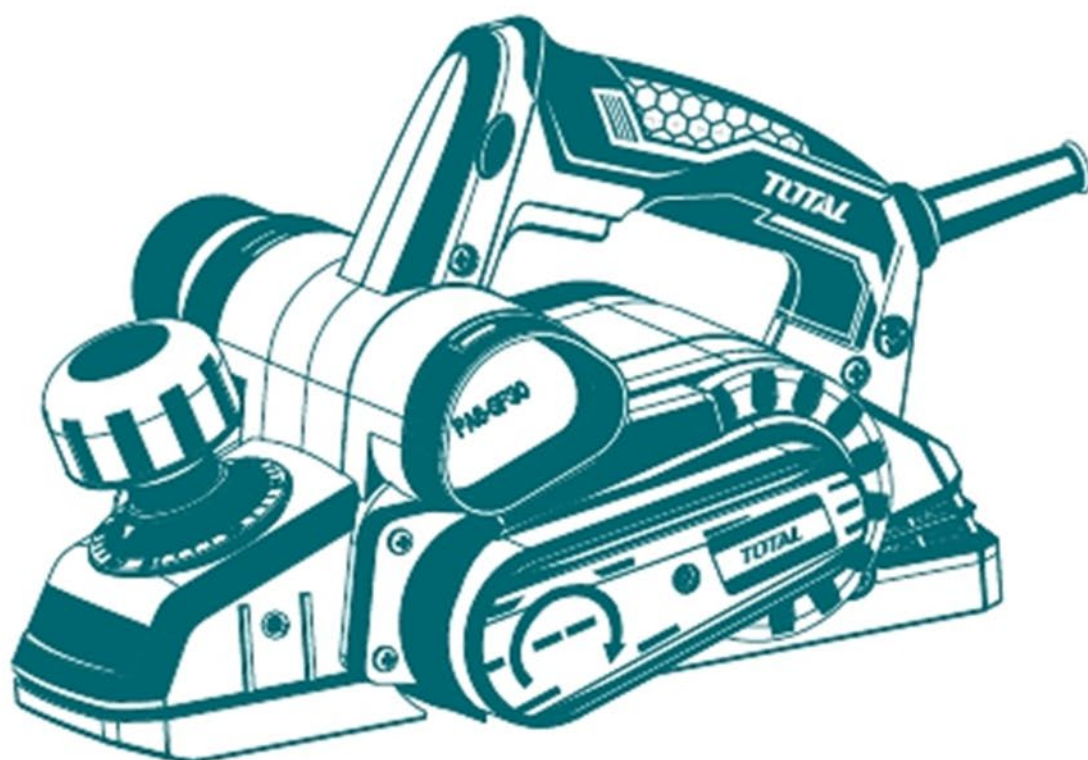
Exploded view



TOTAL

One-Stop Tools Station

TOTAL



ELECTRIC WOOD BRUSH

1050W