

TOTAL

One-Stop Tools Station

TOTAL

SILICONE BATTERY GUN

TGGLI2001



P20S

EN



20V

Security instructions



Caution

Please read the operating instructions carefully and observe the notes provided. Save the instructions for future reference.

Use the instructions to familiarize yourself with the product, its proper use and the safety notes. Safe operation of this machine is only possible when the operating or safety information is fully read and the instructions contained therein are strictly followed.



Note: Due to technical product updates, this document is subject to change without notice.

When using power tools, basic safety precautions should always be followed to reduce the risk of fire, electric shock, and personal injury, including the following:

Product Safety Instructions



Caveat

Do not open the case. Overprotected dangerous voltage is found on any component inside the product's enclosure; contact with these can cause an electric shock.

- The product may only be repaired by qualified service personnel.
- The product cannot be disassembled or changed.
- Do not place the product so that it can fall into water or other liquid. Do not place objects containing water on the product.
- Disconnect the battery pack when the glue gun is not in use.
- Check the battery pack to make sure it engages properly with the hot glue gun.
- Do not allow children or unqualified persons to use the product.
- Never leave the hot glue gun unattended when it is turned on.
- The glue gun is made for indoor use; protect it from water and moisture.

Safety warnings to avoid risk of fire

- Do not use the glue gun in explosive environments.
- Do not hold the hot glue gun over the same spot for a long time.
- Please note that heat can lead to flammable material that is out of sight.
- Put the hot glue gun on the stand after use and let it cool down before storing.

Technical data

Data sheet	
Voltage	20V
Power	20W (Max.50W)
Silicone bar diameter	Ø 11.2mm
Application Capacity	15-18g/min
heating time	60sec

Note: The tool is designed for use with Total's P20S range of batteries and chargers.

Product description

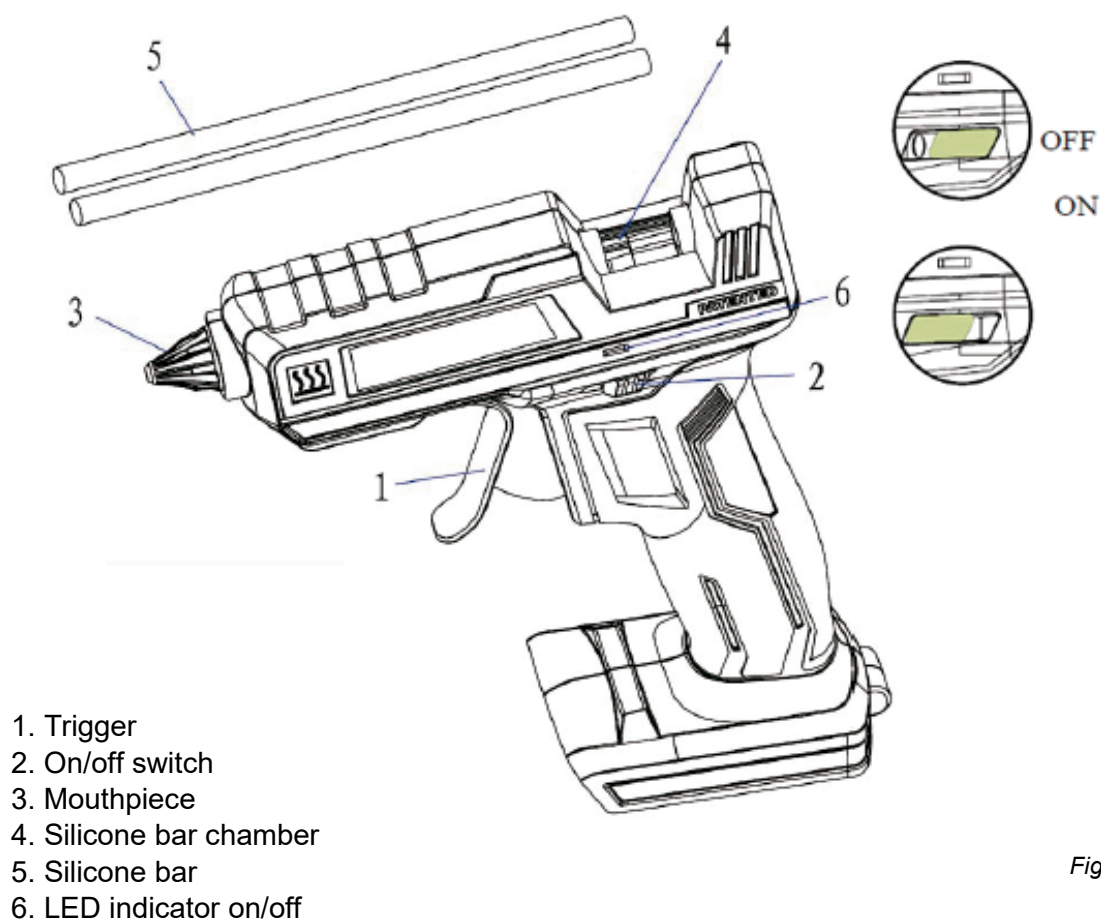
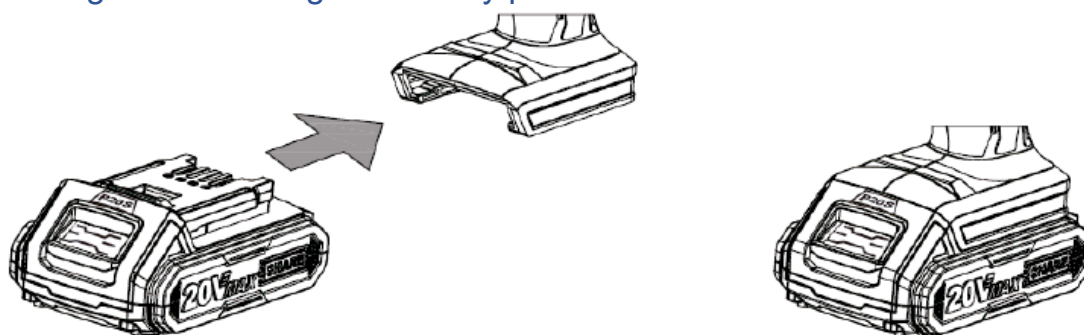


Fig.1

Operating instructions

Installing and removing the battery pack



Battery installation

Fig.2

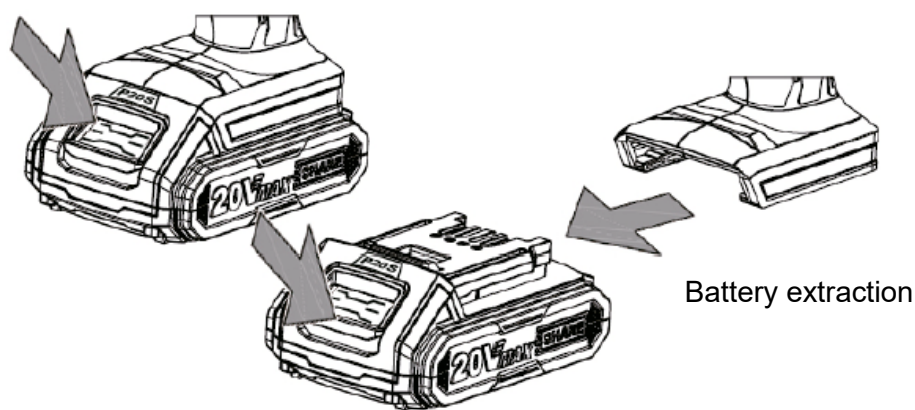


Fig.2

- Make sure the on/off switch is in the off (O) position. (Fig.1)
- Insert the battery into the product as shown. (Fig.2)
- Make sure the battery pack snaps into place and is secured in the product before starting operation.
- Press the button on the battery to remove it. (Fig.3)



Caveat

Battery tools are always in working condition. Turn the switch to the off position and remove the battery pack when the product is not in use or when you carry it by your side.

Insert silicone bars

- Use Ø11.2mm diameter hot glue sticks in this hot glue gun.
- The LED indicator will turn on when a charged battery is installed and the switch is turned to the on (I) position. Make sure the on/off switch is in the off (O) position. (Fig.1).

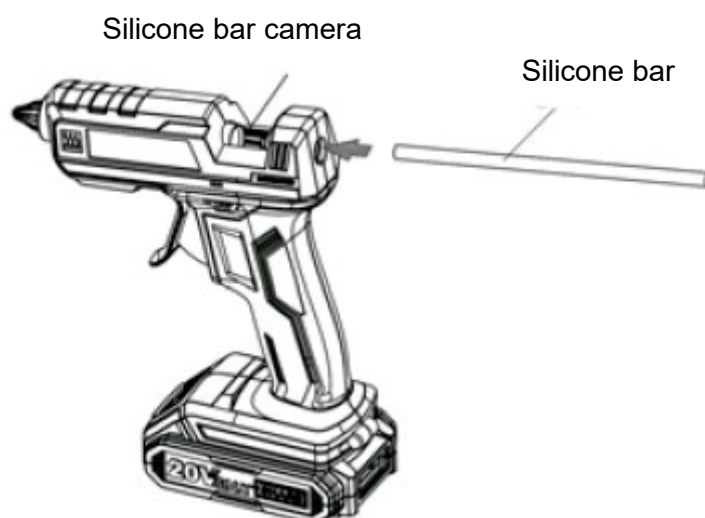


Fig.3

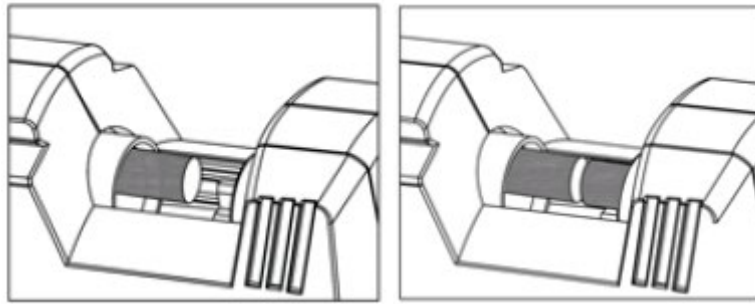


Fig.4

Fig.5

- Insert a glue stick through the opening in the back of the glue gun. Guide the silicone bar into the silicone chamber until it will go no further. (Fig.4)
- Place a piece of paper under the hot glue gun to catch any droplets while the hot glue gun heats up. (Fig.7)
- Install the battery pack.
- Place the glue gun upright on the paper and turn the on/off switch to the on (I) position. (Fig.7)
- When the silicone bar runs out, the silicone gun can't work regularly, because the trigger can't push the silicone bar. (Fig.5).
At this point, you need to put in a new bar, so that the new bar can push the old one, thus using the hot glue gun as normal. (Fig.6).



Fig.6

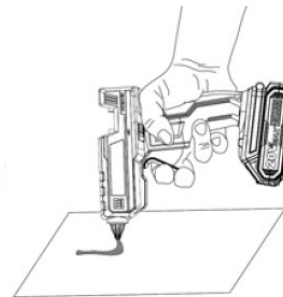


Fig.7

Hot silicone application

- Install the battery pack and turn the on/off switch to the on position. Allow time for the silicone to melt so that it flows freely from the nozzle.
- Holding the silicone gun firmly, position the nozzle close to the surface where the silicone will be applied.
- Squeeze the trigger until silicone comes out of the nozzle. Do not overapply.
- When the desired amount of silicone has been applied, release the trigger. Tilt the nozzle slightly to one side and carefully pull the nozzle away from the object. This helps prevent silicone threads from adhering to the work.

Use tips

- Before applying silicone to a surface or workplace, do a test in a waste place of paper or similar material at your workplace. (Fig.8)
- Take care when applying hot silicone to thin or porous material. The underlying surface could be damaged or the silicone could stick to the surface and be difficult to remove.

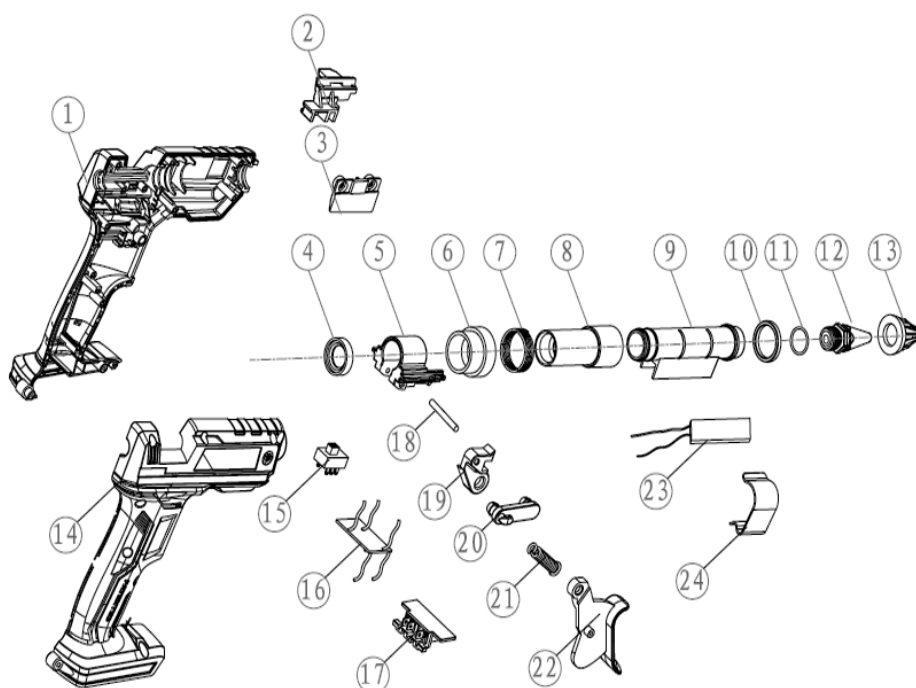
- Do not force the trigger when applying hot silicone. This could damage the glue gun. Use a test piece of material to make sure the silicone has melted enough to flow without forcing.
- Apply only the amount of silicone needed for your application.
- When sticking two objects together, do not lift the object to which hot glue has been applied. Instead, take the other object and attach it to the object you applied hot glue to.
- Do not use your fingers to press down on an object that has just had hot silicone applied to it. This can cause hot silicone to escape from the edges or heat the bonding surface and possibly cause burns or damage to surrounding objects. Allow the silicone to dry completely before moving your work to ensure proper adhesion and reduce the risk of burns. The glue gun is made for indoor use; protect it from water and moisture.

Environment



- Do not dispose of electrical appliances as unsorted municipal waste, use separate collection facilities.
- Contact your local authority for information on available collection systems.
- If electrical appliances are disposed of in landfills, hazardous substances can seep into the groundwater and enter the food chain, harming your health and well-being.
- Recycle raw materials instead of disposing of them as waste.
- The machine, accessories and packaging must be sorted for environmentally friendly recycling.

Exploded view



TOTAL

One-Stop Tools Station

TOTAL



SILICONE BATTERY GUN

20V