

TOTAL

One-Stop Tools Station

TOTAL

MINI GRINDER

TG501032

INDUSTRIAL



130W

Security instructions



Caution

Read all safety warnings and instructions. Failure to comply with them may result in electric shock, fire and/or serious injury.

To ensure safe operation when using your power tool, be sure to follow basic safety principles to reduce the risk of personal injury, electrical shock, and fire. Please read the following instructions before using this product. Save these instructions for future reference.

- Do not allow children to handle the tool. All bystanders must stay away from your work area.
- Protect yourself against electric shock: Keep the tool away from the cord while you work. Do not work on or near "live" equipment or services.
- Do not use the tool in damp or wet areas. Do not use near flammable gases or liquids.
- For your own safety, wear safety glasses. Tie up long hair. Wear ear protectors, especially in confined areas. Keep your body away from moving parts while in use.
- Avoid wearing loose clothing or jewelry to prevent them from being caught in moving parts.
- Don't force the tool, it will do a better and safer job at the rate for which it was designed.
- When not in use, store it in a dry and high place or keep it locked up out of reach of children. Use the tool only for its intended purpose.
- Protect the cord and do not carry the tool by the cord or pull on the cord to remove the plug from the outlet. Protect the cable from sharp objects, heat and oil. Replace it if it is damaged.
- Check before use and always make sure the tool and cord are not damaged.
- Inspect tool cord and extension cords periodically for damage; if they are damaged, have an authorized dealer perform the repair.
- Unplug tools when not in use or change tools, always unplug them from the mains.
- Avoid unintentional starting by making sure the ignition tool is turned off before plugging it in.
- Do not use the tool when you are tired.
- Before use, check the tool for damage; if in doubt, have it checked by an authorized dealer.
- Always have repairs done by a qualified person for your safety.

Note: Remove plug from outlet before making any adjustments or servicing.

Safety rules for correct use



Double insulation for additional protection



Please read the instruction manual before use.



CE conformity.



Wear safety glasses, gloves, hearing protection, and a dust mask.



Waste electrical products must not be disposed of with household waste. Please recycle at the appropriate facilities. Check with your local authority or retailer for recycling advice.



Security alert. Use only accessories supported by the manufacturer.

Additional security warnings

- Do not use damaged, worn or out of shape tools.
- Do not use tools with bent shafts.
- The tool is designed for light work, do not use it for heavy work as it may damage the tool.
- Check the collet nut frequently for tightness, especially if you use the tool at a very high speed.
- Use only accessories supplied or recommended by your dealer; other accessories may cause personal injury.
- Use the correct speed.
- Clean the ventilation slots after use.
- Do not operate the tool with any part of the housing missing or damaged.
- Always wear eye protection with this tool.



Warning

Sanding will produce harmful/toxic dusts on lead painted surfaces, wood and metal. Contact or inhalation of these dusts can endanger the health of the operator and bystanders.

- Keep work area clean, cluttered areas and benches can lead to injuries.
- Remove the adjusting keys and wrenches. Get in the habit of checking to see that keys have been removed from the tool before turning it on.
- Make sure the abrasive is properly mounted and tightened before use and run the tool without load for 30 seconds in a safe position, stop immediately if there

is significant vibration or other defects are detected. If this condition occurs, check the machine to determine the cause.

- Check that the workpiece is properly supported.
- The machine continues to rotate after the tool is turned off.
- Inspect the grinding wheel before use, do not use chipped, cracked or defective products

Other risks

Even when the power tool is used as prescribed, it is not possible to eliminate all residual risk factors:

- a. Health defects resulting from vibration emission if the power tool is used for a longer period of time or if it is not managed and maintained properly.
- b. Injuries and property damage due to broken fixtures breaking suddenly.

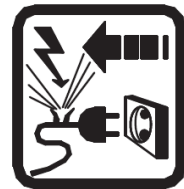


Caution

This power tool produces an electromagnetic field during operation. This field can, in some circumstances, interfere with active or passive medical implants.

To reduce the risk of serious injury, we recommend that persons with medical implants consult their physician before using this power tool.

If the cable is damaged or cut during work, do not touch the cable, immediately unplug the tool. Never use the machine with a damaged cable. The machine must not be damp and must not be used in a humid environment.



Attention

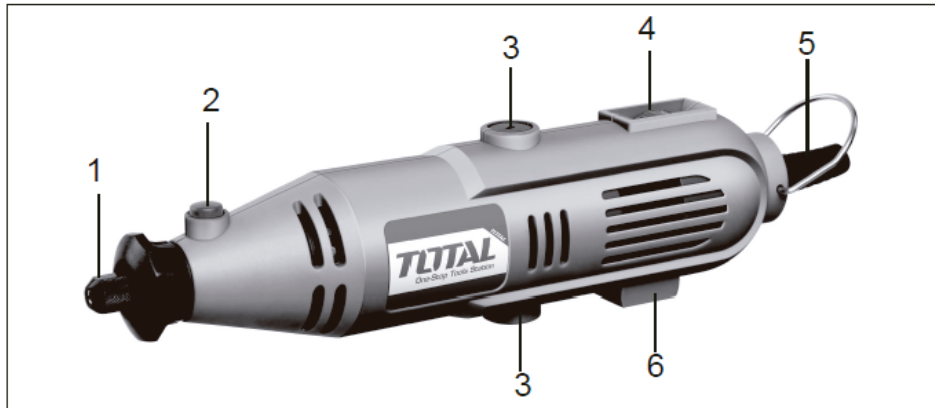
Safe operation of this machine is only possible when the operating or safety information is fully read and the instructions contained therein are strictly followed.

Technical data

Grinder data sheet	
Voltage	220-240V
Frequency	50/60Hz
Power	130W
No load speed	10000-32000/min
Chuck diameter	3.2mm
It includes	1 flex shaft 100 accessories 1 set of brushes 1 briefcase

Product description

- | | |
|------------------------|-------------------|
| 1. Collet nut | 4. Speed selector |
| 2. Spindle lock button | 5. Power cord |
| 3. Brush holder | 6. On/off switch |



Note 2: Not all accessories illustrated or described need to be included in the standard delivery.

Set up

Your rotary tool has been designed for drilling, cutting, sanding, grinding, routing and polishing wood, metal, plastic and stone. The tool is designed for light work, such as engraving, model making, hobbies, etc.

The tool must not be used for "heavy" work, otherwise damage may occur.

Note: Always unplug the tool before attaching or changing the accessory or replacing any refills.

Placing an accessory

- Press and hold the spindle lock button.
- Use the wrench to loosen the nozzle nut.
- Insert the accessory shaft into the collet nut.
- Use the wrench to lightly tighten the caliper nut (do not over-tighten), refer to diameter 3.

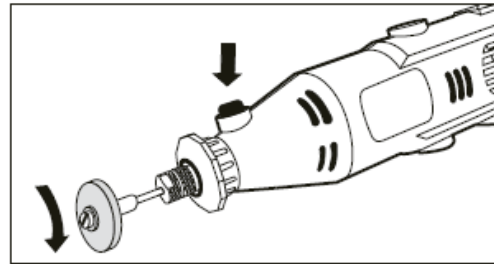
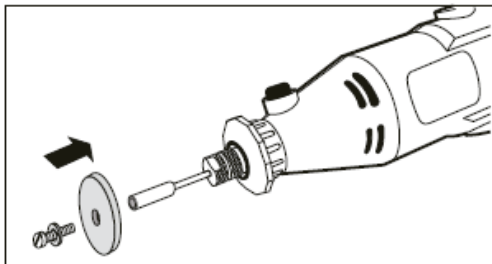
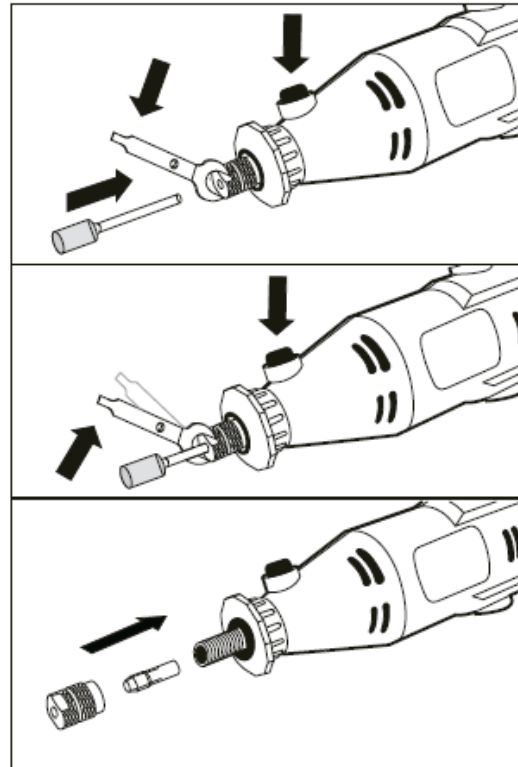
Necklace replacement

When using an accessory with a smaller or larger shaft, i.e. drills, you will need to change the collar as follows:

- Press and hold the spindle lock button.
- Use the wrench to loosen the nozzle nut.
- Remove the nozzle nut and old nozzle.
- Locate the new caliper.
- Restore the caliper nut.
- Release the spindle lock button.

Mounting a cutting / sanding disc.

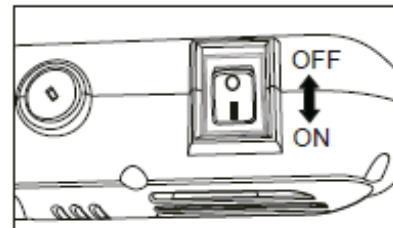
- Use the blade holder (item 12, diameter 1).
- Locate the mandrel as detailed above.
- Unscrew the small screw at the top of the bracket.
- Insert the screw through the disc and screw it into the chuck, do not over-tighten, otherwise the disc may break, see diameter 5 and 6.



On and off

Caution: Please adjust to the slowest speed before power on.

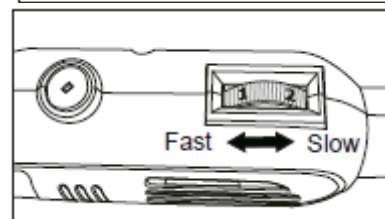
- To turn on the tool, place the on/off switch in the 'I' position.
- To turn off the tool, turn the on/off switch to the 'O' position.



Speed adjustment

The tool has a variable speed control for precise speed adjustment. High performance is achieved by correct speed setting and not high pressure. Set the speed selector to the required speed.

Note: Choose a low speed when working with wood, plastics, and polishing.



Generally speaking, use small tools at high speed and larger tools at lower speed.

Holding the tool

To mill or engrave hold the tool like a pen, be careful not to cover the ventilation slots.

Note: The tool becomes hot during normal operation. Observe the nominal operating time

Maintenance and cleaning

Maintenance

Make sure the tool is unplugged from power before performing any maintenance.

Replacement of carbon brushes

Carbon brushes must be checked periodically. There are two brushes on the tool and they must be replaced in pairs.

- Remove the carbon brush holders with a small flat blade screwdriver and check the brushes.
- If the brush length is less than 6mm, please replace both brushes, let the machine run without load for 15 minutes. Use only the correct type of carbon brushes.

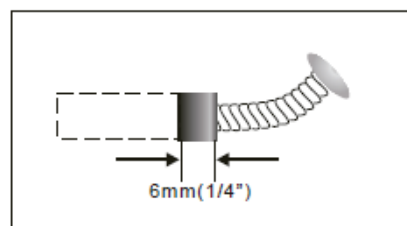
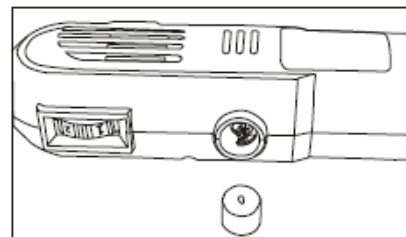
Note: There is no replacement brush with this tool, if needed, please call the help line.

Cleaning

Periodically clean the ventilation slots. Use only mild soap and a damp cloth to clean the tool.

Many household cleaners contain chemicals that can seriously damage plastic. Do not use gasoline, turpentine, lacquer, paint thinners, or similar products on any part of the tool.



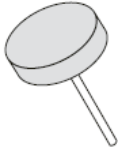


Do not put any liquid inside the tool and never immerse any part of the tool in liquid.



Use of accessories

The chart below lists the description, speed of use, and range of some of the small items supplied with the tool by category. To achieve the best performance of the tool, it is strongly recommended that you read it before operation; if you do not adhere to this, the accessories may fail.

Note: Always wear eye protection, insert shaft fully into collet. Use only up to the speeds listed below.

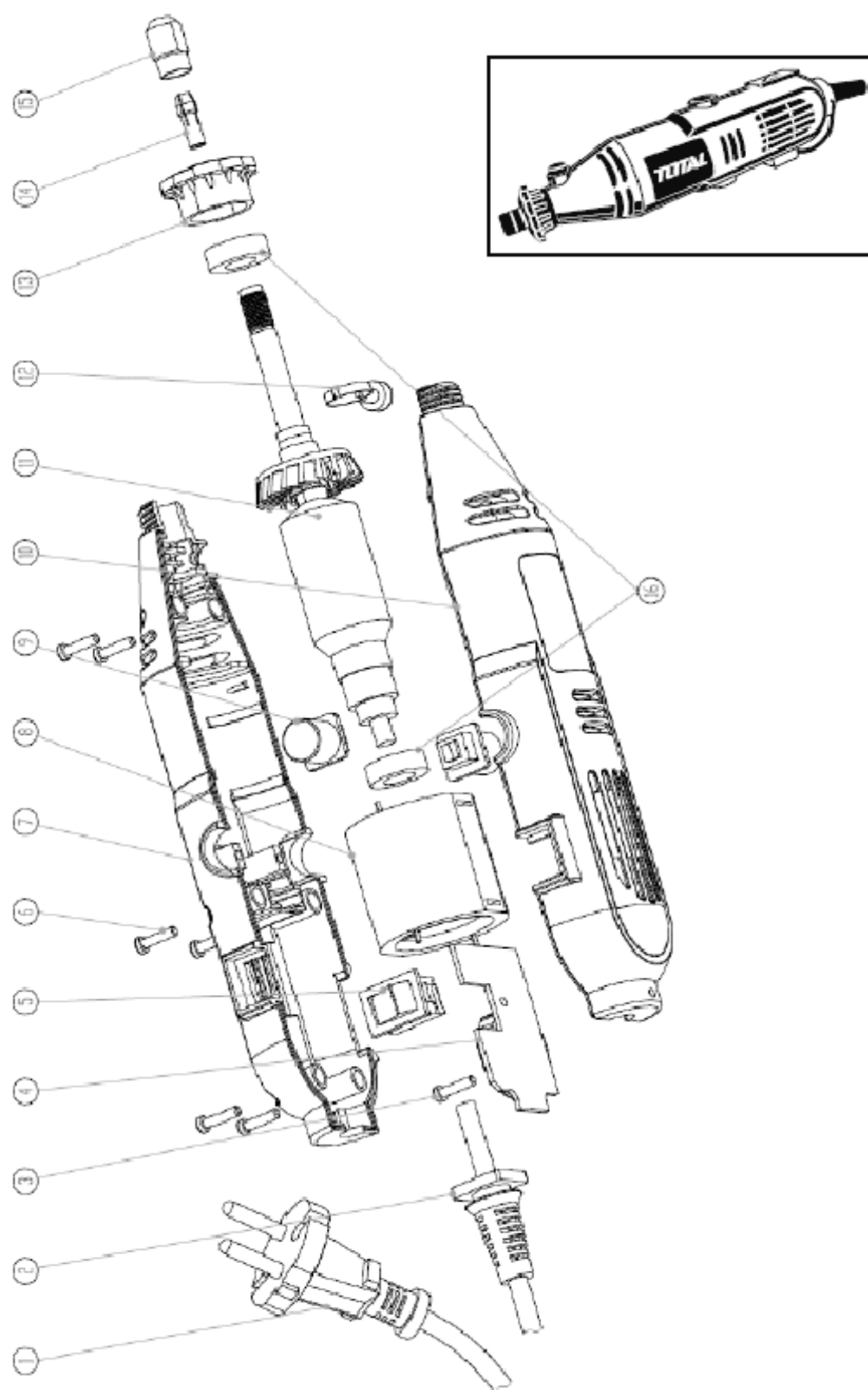
Accessory	Description	Speed	to use in
	grinding stones Various styles of heads, on shafts	At maximum speed 30,000rpm	Metal Steel
	diamond bits various head styles	At maximum speed 30,000 rpm	Wood Plastic Copper Aluminum Zinc Nickel Mild steel Metal
	polishing wheel Mounted to polishing wheel holder	At half speed 15,000 rpm	Metal Mild steel
	Sanding / cutting discs Mounted to tool holder Note: Do not over- tighten the screw.	At half speed 15,000 rpm	Metal Mild steel Wood
	sanding drum Mounted on drum stand	At maximum speed 30,000 rpm	Metal Mild steel
<p><i>Note: To fit the drum, first loosen the small screw at the top of the drum support, this will allow the rubber to relax. Slide the sanding drum into the bracket. To secure, simply tighten the screw and the rubber drum will swell, gripping the sanding drum.</i></p>			

Environment



- Do not dispose of electrical appliances as unsorted municipal waste, use separate collection facilities.
- Contact your local authority for information on available collection systems.
- If electrical appliances are disposed of in landfills, hazardous substances can seep into the groundwater and enter the food chain, harming your health and well-being.
- Recycle raw materials instead of disposing of them as waste.
- The machine, accessories and packaging must be sorted for environmentally friendly recycling.

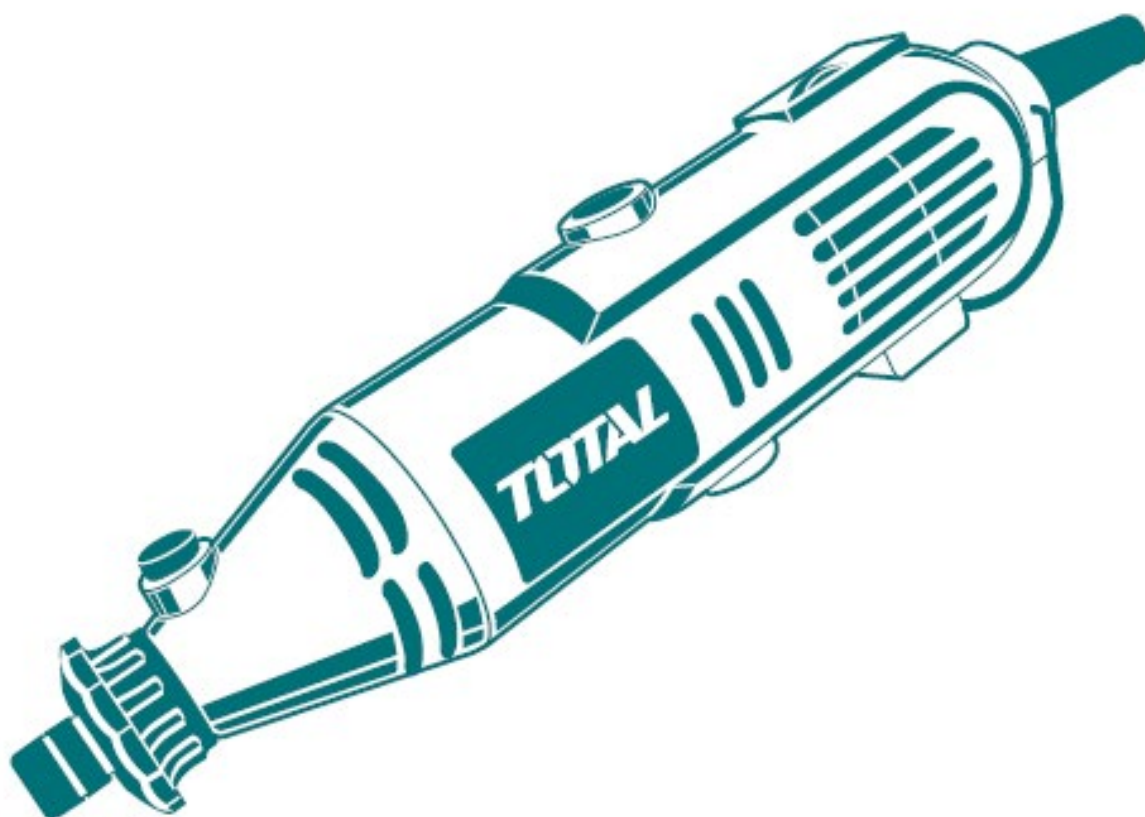
Exploded view



TOTAL

One-Stop Tools Station

TOTAL



MINI GRINDER

130W