

# TOTAL

One-Stop Tools Station

TOTAL

## MIXER

TD614006



# 1400W

# Security instructions



## Caution

Read all safety warnings and all instructions. Failure to follow warnings and instructions can cause electric shock, fire, and / or serious injury.

*Note: Save all warnings and instructions for future reference.*

### 1) Work area safety

- a. Keep the work area clean and well lit to avoid accidents.
- b. Do not use power tools in explosive atmospheres, such as in the presence of flammable liquids, gases, or dust that can cause fires.
- c. Keep children and other unauthorized persons away while using a power tool. Distractions can cause you to lose control of the tool.

### 2) Electrical safety

- a. Power tool plugs must match the outlet. Never modify the plug in any way. Using a proper plug reduces the risk of electric shock.
- b. Avoid body contact with grounded surfaces such as pipes, radiators, ranges, and refrigerators. There is an increased risk of electric shock if your body is grounded.
- c. Do not expose power tools to rain or wet conditions. Water entering a power tool will increase the risk of electric shock.
- d. Never use the cord to carry, pull, or unplug the power tool. Keep the cord away from heat or oil.
- e. When using a power tool outdoors, use an extension cord suitable for outdoor use.
- f. If it is unavoidable to use the tool in a humid location, use a residual current device (RCD) protected supply to reduce the risk of electric shock.

### 3) Personal security

- a. Always be alert, watch what you are doing, and use common sense when operating the tool.
- b. Do not use a power tool if you are tired or under the influence of drugs or other substances.
- c. Use personal protective equipment. Always wear eye protection. Protective equipment such as a dust mask, non-slip safety shoes, hard hat, or hearing protection used in the right conditions will reduce personal injury. Also, do not wear loose clothing or jewelry.
- d. Avoid accidentally turning the tool on. Make sure the switch is in the off position before connecting it to the power supply and moving it.
- e. Remove any adjusting key or wrench before turning on the power tool. A wrench or wrench attached to a rotating part of the power tool can cause serious injury.
- f. If dust extraction and collection devices are used, make sure they are properly connected. Use these devices properly and you will reduce dust hazards.

### 4) Use and care of power tools

- a. Do not force the tool. Use the right power tool for each use.

- b. Do not use the power tool if its ignition switch does not work. Any power tool that cannot be controlled with the switch is dangerous and must be repaired.
- c. Disconnect the plug from the power source before making any adjustments, changing accessories, or storing the tool to avoid accidentally starting the tool.
- d. Use the power tool, accessories and drill bits, etc. in accordance with these instructions, taking into account the working conditions and the work to be carried out. Using the power tool for operations other than those intended could result in a dangerous situation.
- e. Store power tools out of the reach of children and do not allow anyone unfamiliar with the tool to use it.
- f. Maintain power tools. Check for misalignment or binding of moving parts, broken parts, and any other conditions that may affect the operation of power tools. If damaged, have power tool repaired before use. Many accidents are caused by poorly maintained power tools.
- g. Keep cutting tools sharp and clean. Properly maintained cutting tools with sharp cutting edges are less likely to jam and are easier to control.

#### 5) Service

- a. Have your power tool repaired by a qualified person and use replacement parts recommended by the manufacturer. This will ensure that the safety of the power tool is maintained.

## Safety rules for correct use



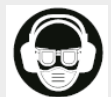
Double insulation for additional protection



Read the instruction manual before use.



CE conformity.



Wear safety glasses, hearing protection and a dust mask.



Waste electrical products must not be disposed of with household waste. Please recycle at the appropriate facilities. Check with your local authority or retailer for recycling advice.



Security alert. Use only accessories approved by the manufacturer.

## Additional safety warnings

- Wear ear protectors. Exposure to noise can cause hearing loss.
- Always route the cable to the rear, away from the machine.
- Do not carry the machine by the cable.
- When working with the machine, always hold it firmly with both hands and stand firm. Loss of control can lead to injury.
- During breaks in work or when you are not using the tool (eg changing work tools, repairs, cleaning, adjusting), disconnect the tool from the power supply.
- Unqualified persons cannot use this tool.
- Keep tool accessories out of the reach of children.
- Use only original accessories recommended by the manufacturer.

## Other risks

Even when the power tool is used as prescribed, it is not possible to eliminate all residual risk factors:

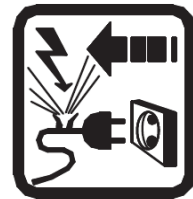
- a. Health defects resulting from the emission of vibrations if the power tool is used for a longer period of time or if it is not properly managed and maintained.
- b. Injury and property damage from broken accessories suddenly breaking.



### Caution

This power tool produces an electromagnetic field during operation. This field can, in some circumstances, interfere with active or passive medical implants.

To reduce the risk of serious injury, we recommend that individuals with medical implants consult their physician before using this power tool.



If the cord is damaged or cut during work, do not touch the cord, immediately unplug the tool. Never use the machine with a damaged cord.

The machine must not be damp and must not be used in a humid environment.



### Attention

Safe working with this machine is only possible when the operating or safety information is fully read and the instructions contained therein are strictly followed.



## Technical data

Data sheet	
<b>Power</b>	1400W
<b>Voltage</b>	220-240V
<b>Frequency</b>	50 / 60Hz
<b>No-load speed</b>	0-500 / 0-800min-1
<b>Mixing bar</b>	M14 (120mm)

## Product description

The machine has been designed to mix liquid and powder building materials such as paint, mortar, adhesive, plaster and similar substances. The relevant mixing action (which depends on the consistency of the materials and the amount to be mixed) must be set for the appropriate mixing tool.

Please note that our unit is not designed for commercial, industrial, or professional use. The warranty does not cover whether the unit was used in commercial, industrial or professional sectors or comparable activities.



### Warning

You must adhere to certain safety precautions when using the equipment to prevent injury and damage from occurring. Therefore, you should always read this operation manual carefully.

This manual should be kept in a safe place so that the information it contains is always available. This operating manual must accompany the equipment if it is transferred to another person.

We do not accept any responsibility for accidents or damages resulting from ignoring this manual and the safety instructions.

## Set up



### Mixer Usage Precautions

#### Attention

You must adhere to the following basic safety measures against electric shock, injury, and fire hazard when using power tools. Read and follow these instructions before using any tool. These instructions should be kept in a safe place.

- The equipment must never be used in environments where an explosive atmosphere exists. Never mix solvents or substances containing solvents that have flash points below 21 ° C
- Do not let the cord touch any part of your body.
- Use only the extension cord approved for use in the work area.
- The unit should only start and stop when it is inside a mixing container. Make sure the mixing container is placed on a solid and secure base.
- Never put your hands or any other object into the mixing container during the mixing process.
- We recommend that you always wear industrial safety gloves, a dust mask and safety glasses when working with the tool. Also, wear appropriate clothing for this type of work.
- Always allow the reaction pair.

### Assembling the mixer

- First screw the mixer part (6a) together with the mixer part (6b).
- Then screw the mixer 86) onto the mixer holder (5). Use the two keys to do this.
- Use one of the wrenches (a) to hold the mixer stand (5) in place and then use the second wrench (b) to tighten the mixer (6).
- Proceed in the reverse sequence to disassemble the mixer.

# Operating modes

Before initial operation check whether the rated frequency of the power supply corresponds to the details of the type plate. Before using the tool, please read the instruction book carefully.

## start

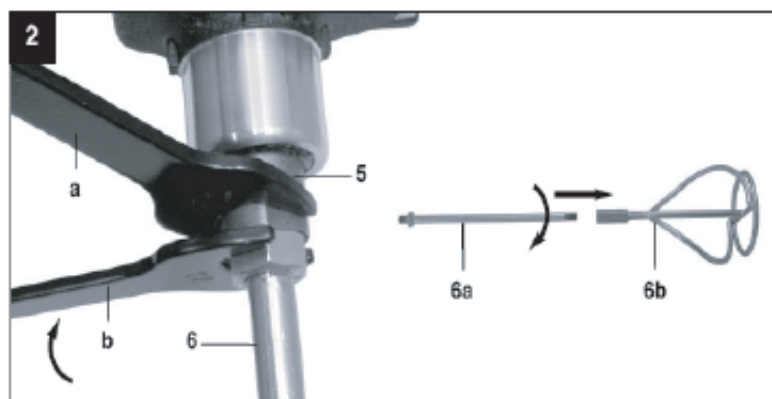
Make sure the data listed on the nameplate matches the mains voltage before connecting the unit.

## On / off switch

- On: press the switch (1)
- Continuous operation: Press the lock knob on the switch (1) (2) to lock it in place
- Off: Briefly press the switch (1)

## Speed control

- Use the speed control (3) to select the speed.
- Shift between first - second gear (4)
  - The switch position allows you to work at high or low speeds.
  - The position of the shift switch should only be changed when the unit is stopped, to avoid damage to the gear.
  - I: First gear
  - II: Second gear



## Using the mixer

- The unit should be run at low speed before submerging or removing it from the mix.

- Speed should only be maximized after it has been fully immersed in the mix, to ensure the motor stays as cool as possible.
- The machine must move within the mixing container during the mixing process.
- Continue the mixing process until all components of the mixture have been processed. Always clean the mixer after you have finished using it.

## Maintenance

### Maintenance

- Remove the plug from the outlet before performing any adjustment, service or maintenance.
- Your power tool does not require additional lubrication or maintenance. Always store your power tool in a dry place.
- If the power cord is damaged, it must be replaced by the manufacturer, its official dealer, or similarly qualified persons to avoid a hazard.
- There are no parts installed inside the unit that require maintenance.

### Cleaning

- Keep safety devices, ventilation slots, and motor housing as free from dirt and dust as possible.
- Clean the unit by wiping it with a clean cloth or clean it with low pressure compressed air.
- We recommend that you always clean the unit immediately after use.
- Clean the unit regularly by rubbing it with a damp cloth and a little mild soap. Do not use cleaners or solvents; These will attack the plastic parts of the unit.
- You should also make sure that water does not get inside the unit.

### Carbon brushes

- If excessive sparking occurs, you should have a qualified electrician check the carbon brushes.
- They must be changed by qualified personnel.

### Attention

Only qualified personnel can change the brushes.





## Problem solving

Possible problem	Possible reason	Solution
The operation switch is on, but the motor does not work.	The cables from the mains plug or socket are loose	have the plug and socket checked or repaired
	The switch is faulty	Replace switch
	The switch contact has failed	replace switch
The operation switch is on, but unusual noises can be heard, the engine does not run or is very slow.	Component stuck	Have the power tool serviced or repaired
	Too much thrust, as a result the engine is dragging.	Use less oomph during the task
	Foreign substances have gotten into the engine.	Have foreign substances removed
Engine overheats	Lack of lubricating grease or is contaminated	Apply or replace lubricating grease
	Pressure too high	Use less oomph during the task
	Short circuit in armature	Have the armor replaced
Frequent or strong sparks at the switch	Worn or stuck carbon brushes	Have the carbon brushes checked
	Rough switch performance	Have the switch surface cleaned or grounded

*Note: Before doing any maintenance and cleaning work on the machine, disconnect the cable from the socket.*

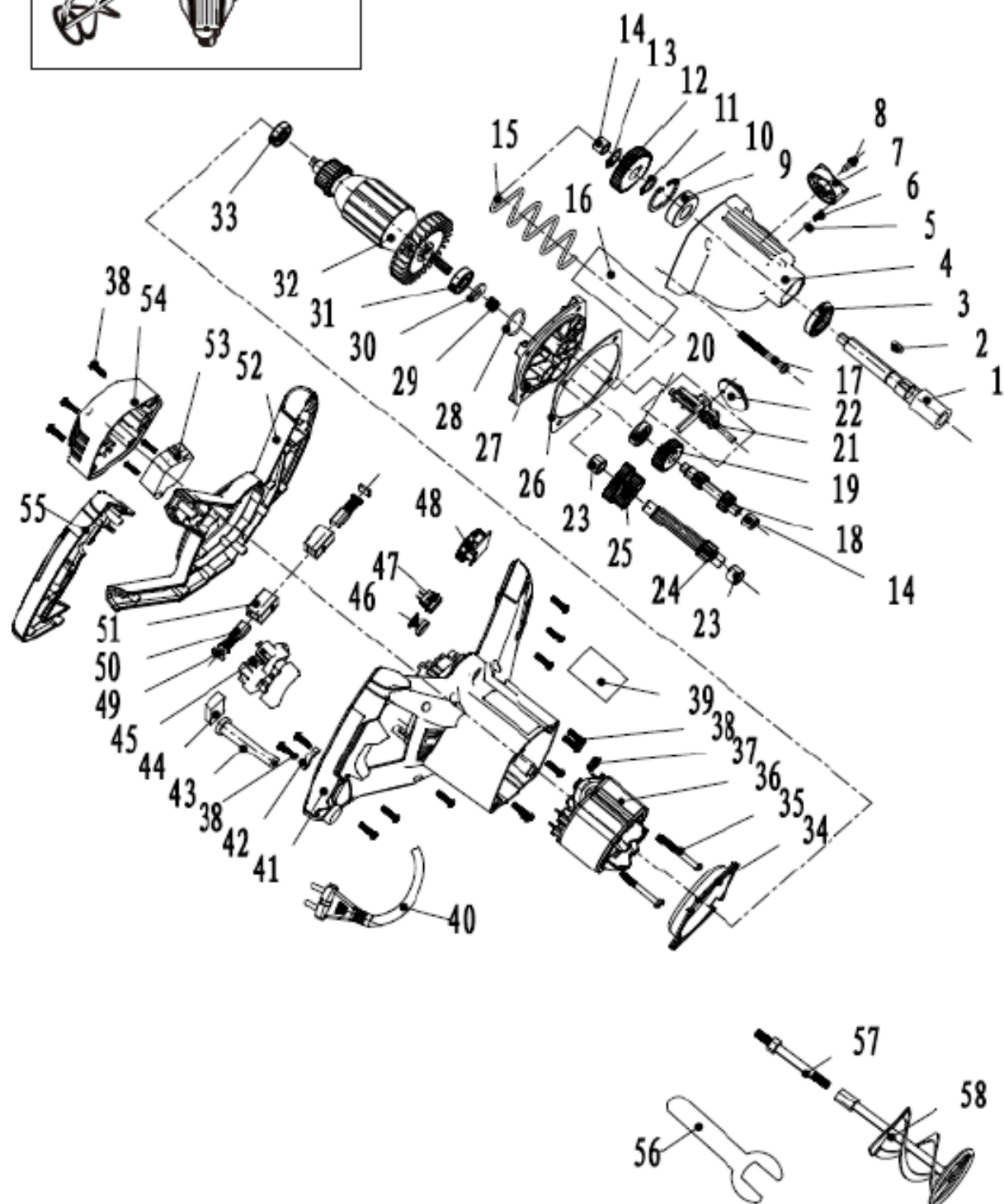
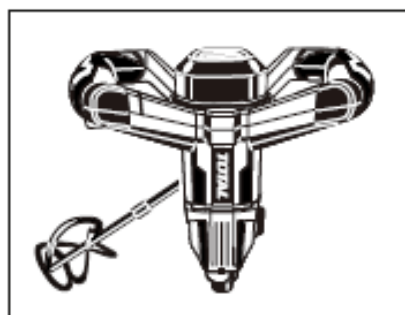
## Environment



- Do not dispose of electrical appliances as unsorted municipal waste, use separate collection facilities.
- Contact your local authority for information on available collection systems.
- If electrical appliances are disposed of in landfills, hazardous substances can seep into groundwater and enter the food chain, damaging your health and well-being.
- Recycle raw materials instead of disposing of them as waste.
- The machine, accessories and packaging must be classified for environmentally friendly recycling.
- Plastic components are labeled for categorized recycling.



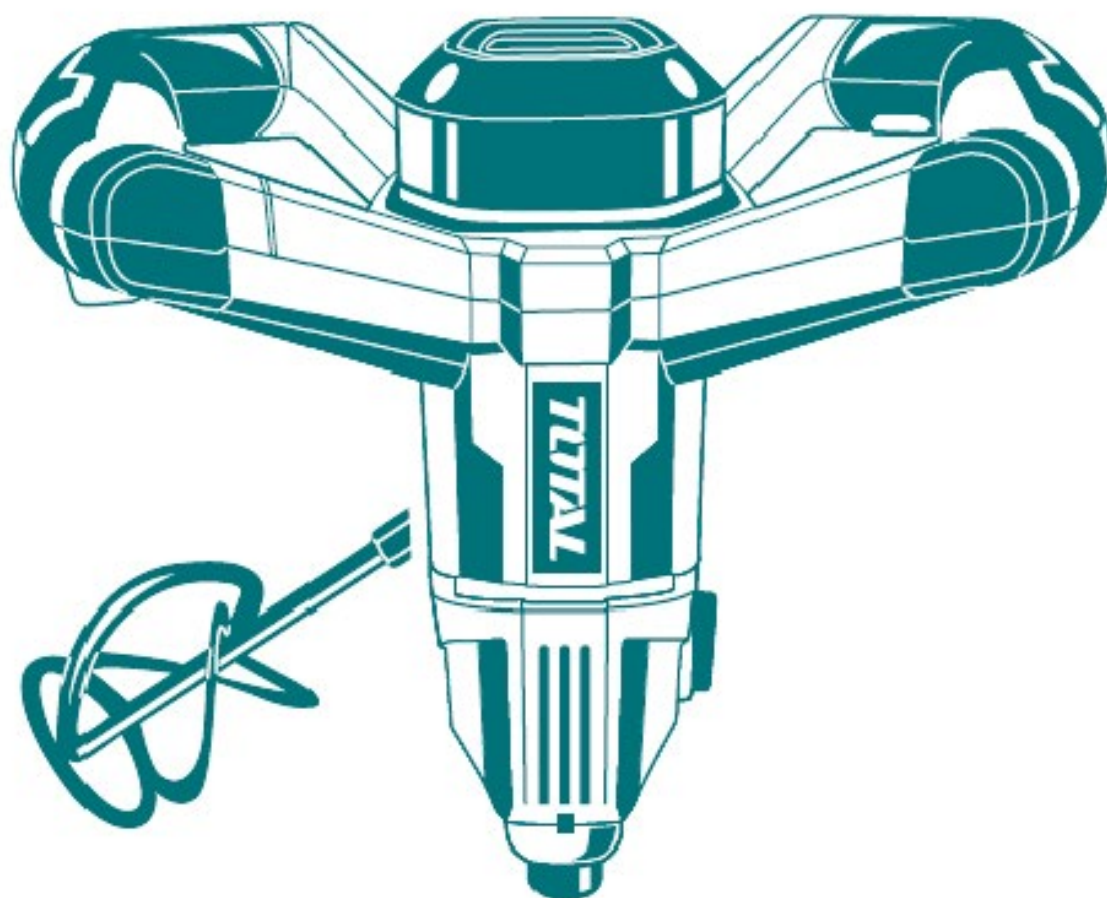
## Exploded view



# **TOTAL**

One-Stop Tools Station

**TOTAL**



**MIXER**

**1400W**