

TOTAL

One-Stop Tools Station

DOUBLE EMERY

TBG15015



CE



150W

Security instructions



Caution

Please read this manual and the safety instructions carefully to reduce the risk of electric shock, other injuries, or potential hazards associated with this tool.

- This product is not designed for industrial or commercial applications. Do not use the tool to perform applications for which it is not designed.
- This product is not intended for use by young children or unqualified persons without proper supervision.
- The work area must be kept clear at all times. A cluttered work area increases the risk of accidents for you and others.
- Children and other visitors should be kept away from the work area and should not be allowed to handle the tool or power cord.
- Always wear safety equipment such as safety glasses to protect your eyes from dust, sparks, and other debris, a face mask in dusty conditions, ear muffs when working with power tools, and appropriate clothing.

Do not wear loose clothing as it may get caught in moving parts. Do not wear jewelry when using the tool as these items can get caught in moving parts.

- Avoid any bodily contact with grounded surfaces, eg pipes, while using the tool. Contact can cause an electric shock.
- Do not use power tools in the rain or in damp or wet conditions.
- Do not use power tools near flammable liquids or gases.
- Make sure the workpiece is securely clamped or clamped in a vise.
- Make sure you are well balanced and have a firm footing when using power tools. Avoid situations where you have to reach or overextend.
- Do not overload or force power tools. This can cause injury and affect the performance of the tool.
- Before each use, check the tool for damage and make sure the guard is on properly. Moving parts and accessories must also be checked and installed correctly. Check the condition of the housings and any other parts that may affect the operation of the tools. If the switch cannot be turned on and off, do not use the tool.

Note: For safety, it is important that all damaged parts be repaired by an authorized service technician.

- When changing accessories, always disconnect the plug from the mains.
- Make sure accessories used in conjunction with the tool are kept in good condition. Dull or damaged accessories will not allow the tool to perform at its optimum level.
- The power cord should be checked periodically and if damaged, it should be repaired by an authorized electrical specialist.
- Never carry power tools near the switch. This can cause an accidental start.
- Make sure the switch on the tool is in the off position before connecting the tool to the power source.
- Do not carry the tool by the power cord. This may cause damage or electric shock.
- Do not disconnect the plug from the power source using the power cord.
- Protect the cable from heat, oil and sharp objects.
- This tool should be stored in a dry and secure area where children cannot access it.
- Do not use power tools when you are tired or fatigued.

- Be sure to remove all wrenches or the like used to assemble the tool before using it.
- Do not use the tool for purposes other than those recommended in the instructions or in the product catalog. Make sure that the accessories and other comply with the recommendations in the instructions or the product catalog.
- If the power cord is damaged, contact your nearest official dealer for repair.
- Do not use the equipment in an explosive atmosphere (danger of explosion). Improper use can cause fire.

Additional safety precautions

- Make sure the power source meets the requirements stated on the tool's nameplate.
- Before connecting the power cable to the mains, make sure that the switch is in the off position.
- Always turn off the machine and disconnect it from the mains before changing wheels or stones, as well as removing any obstructions or making any adjustments.
- To avoid the risk of injury, make sure that the wheels are placed correctly according to the instructions. Check before use.
- Always run the tool for about a minute before starting work on it. In the event of excessive vibration or the like, immediately check whether the installation has been placed correctly.
- Check the position of the power cables before starting work. Make sure they are placed at the rear of the machine.
- Keep hands and other body parts well away from the teeth while in use. Do not attempt to remove any material while it is in operation.
- Always wear a face mask, earmuffs, and eye protection when using power tools. Other safety equipment such as gloves, helmet, and apron are also recommended.
- Always check the workpiece before operation and remove any obstructions.
- Do not use this tool without the safety guard, tool rests, and safety guard in place. Always check before the operation.
- Use the grinding wheel supported on a workbench. Make sure it's safe.
- Never use the tool on the ground or while crouched down. Operation in this manner may cause serious personal injury.
- Let the machine reach its optimum speed before starting work.
- The wheels will continue to rotate for a short time after the tool is turned off. Be careful.
- Do not touch the grinding wheel or workpiece directly after operation. Let the wheel and material cool down.
- Do not use damaged or defective abrasive wheels. This can cause the wheels to break causing personal injury while in operation.
- Only use original grinding wheels with the correct diameter.
- Also make sure they are the diameter specified for the tool shaft. Do not use reducing washers or adapters for accessories where the hole size is larger than the shaft size.
- Be careful not to damage the flanges or the shaft. Damaged flanges or axles can damage the wheel.

- Watch out for flying sparks. Use the tool in a way that sparks fly away from you or other people and flammable materials.
- Do not attempt to perform tasks beyond the capability of this tool. Do not force the tool to perform applications for which it is not designed.



Please read the instruction manual before use.



CE conformity.



Wear safety glasses, hearing protection and a dust mask.



Waste electrical products must not be disposed of with household waste. Please recycle at the appropriate facilities. Check with your local authority or retailer for recycling advice.

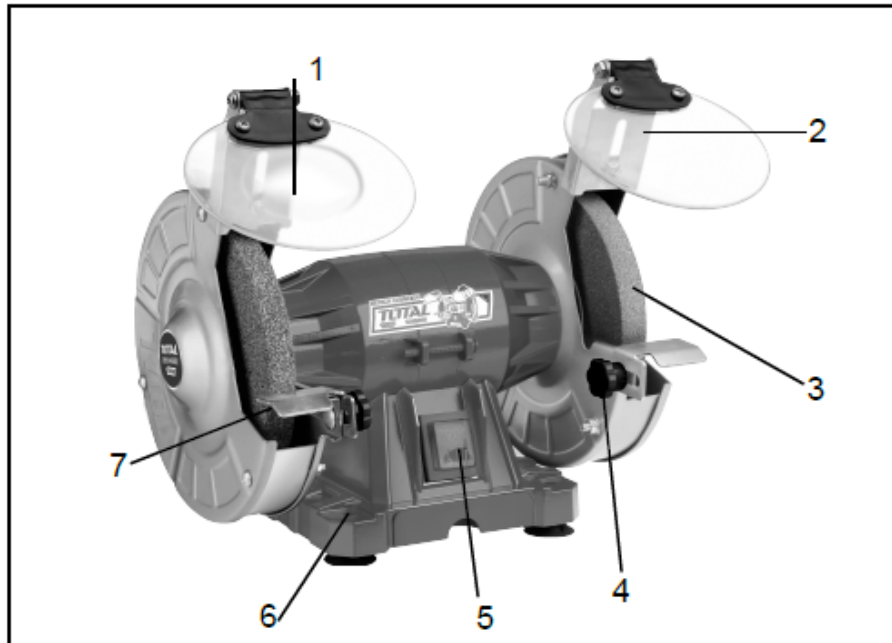


Security alert. Use only accessories supported by the manufacturer.

Technical data

Data sheet	
Power	150W
Voltage	220-240V~50/60Hz
no load speed	2950/min
stone diameter	150mm (6")
Net weight	5kg

Product description



1. Guard
2. Bracket for spark arrestor/guard
3. Grinding wheel/abrasive stone
4. Adjustment lever for work support
5. switch
6. Mounting holes
7. Work support

Note: This product is designed for home use only. It is not designed for industrial or commercial applications. Do not use the tool to perform applications for which it is not designed. The warranty would be void.

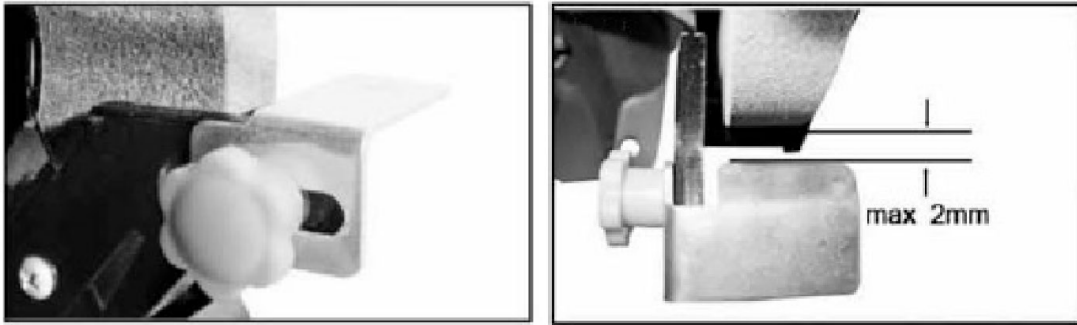
Mounting

- Remove both eye protectors from the packaging.
- Attach the guards to the two mounting brackets over the grinding wheels with the spark arrestor flanges facing outward with the screw and washer provided.
- At this stage do not fully tighten.



Work support adjustment

- Take out the rest of the package and fix it on the machine with the provided knob and washer as shown in the picture.
 - The space between the supports and the grinding wheels must be checked before use.
 - Measure the space between the grinding wheel and the supports; this should be as small as possible, no larger than 2mm.
 - If you don't loosen the two knobs on each of the brackets, set the correct gap and fully tighten.
- The gap must be maintained as the wheel wears.



Set up

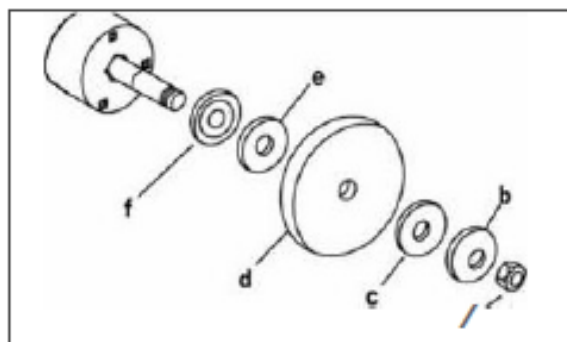
Use of the tool

Make sure the machine is properly assembled. Mounting holes are provided in the base of the machine for this purpose, but the screws are not provided.

Plug in the power supply and push the on/off switch to the on position. Turn tool off and unplug when not in use.

Change of abrasive wheels

- First unplug it from the network.
- Remove the guard brackets, then loosen and remove the three screws that hold the wheel guard covers in place.
- Remove the cover.
- Loosen and remove the two wheel retaining nuts (a).
- You may have to hold the wheel and give the wrench a firm blow with a soft-head hammer to loosen the lug nut.
- Take the large domed washer - paper washer (c).
- Remove the wheels/grinds (d).



Avoid engine damage

If you use the tool continuously at low speed, it is important that you unload the tool from time to time.

Running the tool with no load at full speed for about a minute creates a flow of cooling air for the motor.

Maintenance

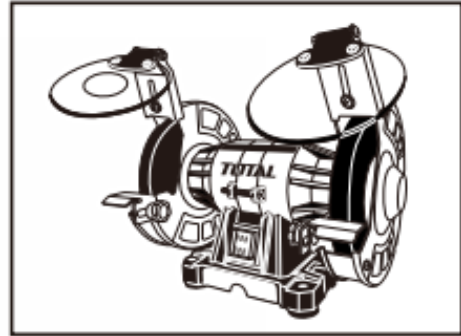
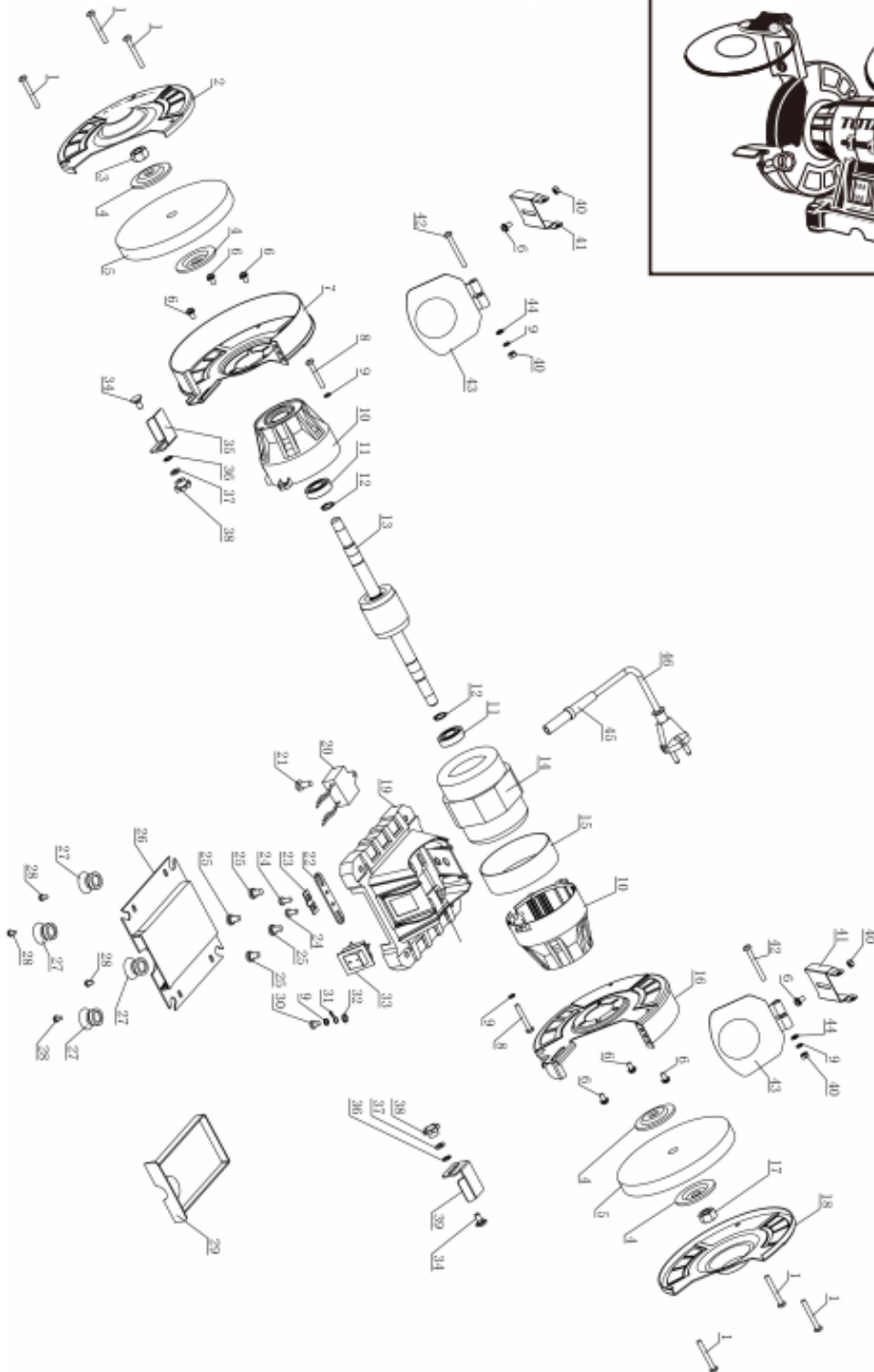
- Always clean the tool after each use.
- Do not use abrasive wheels that are worn or damaged. This can result in motor overload and poor performance.
- Keep the motor housing vents clean and unobstructed at all times. Remove dust and dirt at regular intervals.
- Take due care to ensure that the engine is not damaged by oil or water.
- Periodically inspect the tool for damage that may be caused by normal use. Make sure all parts are connected correctly. Do not use this product if any parts are missing or damaged.
- Consult an authorized power tool repair agent in the event of damage or failure.

Environment



- Do not dispose of electrical appliances as unsorted municipal waste, use separate collection facilities.
- Contact your local authority for information on available collection systems.
- If electrical appliances are disposed of in landfills, hazardous substances they can seep into the groundwater and enter the food chain, harming your health and well-being.
- Recycle raw materials instead of disposing of them as waste.
- The machine, accessories and packaging must be sorted for recycling
- environmentally friendly

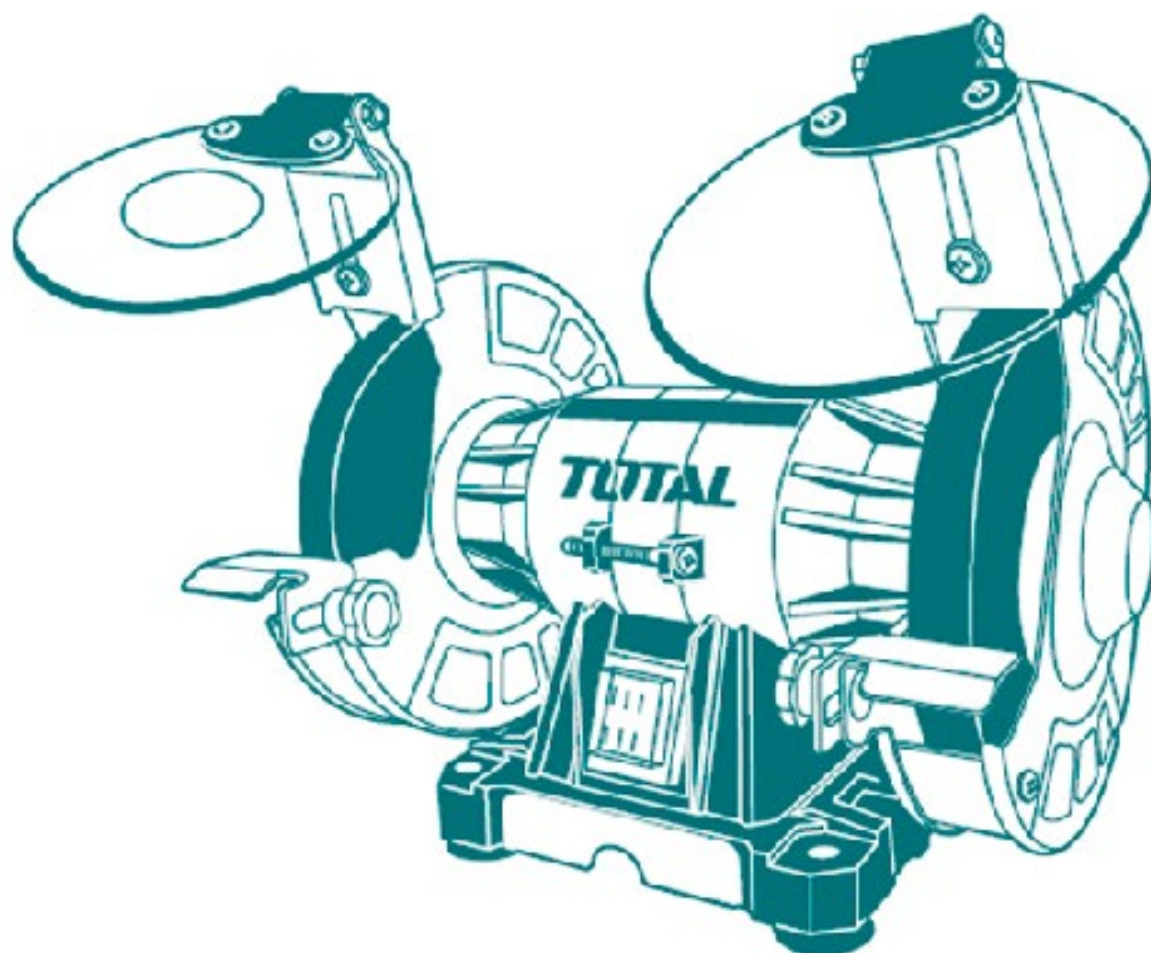
Exploded view



TOTAL

One-Stop Tools Station

TOTAL



DOUBLE EMERY

www.millasur.com