

TOTAL

One-Stop Tools Station

TOTAL

BATTERY POLISHER

TAPLI2001



20V

Security instructions



Caution

Read all safety warnings and all instructions. Failure to follow the warnings and instructions may result in electric shock, fire, and/or serious injury.

Note: Save all warnings and instructions for future reference. Due to our ongoing R&D&I program, the specifications in this document are subject to change without notice.

1) Work area safety

- a. Keep the work area clean and well-lit to prevent accidents.
- b. Do not use power tools in explosive atmospheres, such as in the presence of flammable liquids, gases, or dust that can cause fires.
- c. Keep children and other unauthorized persons away while using a power tool. Distractions can cause you to lose control of the tool.

2) Electrical safety

- a. Power tool plugs must match the outlet. Never modify the plug in any way. Using a suitable plug reduces the risk of electric shock.
- b. Avoid bodily contact with grounded surfaces such as pipes, radiators, ranges, and refrigerators. There is an increased risk of electric shock if your body is grounded.
- c. Do not expose power tools to rain or wet conditions. Water entering a power tool will increase the risk of electrical shock.
- d. Never use the cord to carry, pull or unplug the power tool. Keep the cable away from heat or oil.
- e. When using a power tool outdoors, use an extension cord suitable for outdoor use.
- f. If using the tool in a damp location is unavoidable, use a Residual Current Device (RCD) protected supply to reduce the risk of electric shock.
- g. Make sure the mains voltage is the same as the voltage on the tool's nameplate. Remove plug from outlet before making any adjustments or servicing.

3) Personal security

- a. Always stay alert, watch what you are doing and use common sense when using the tool.
- b. Do not use a power tool if you are tired or under the influence of medication or other substances.
- c. Wear personal protective equipment. Always wear eye protection. Protective equipment such as a dust mask, non-slip safety shoes, hard hat, or hearing protection used in the proper conditions will reduce personal injury. Also don't wear loose clothing or jewelry.
- d. Prevent the tool from turning on unintentionally. Make sure the switch is in the off position before connecting to power source and moving.
- e. Remove any adjusting wrenches or wrenches before turning on the power tool. An adjustable wrench or wrench placed in a rotating part of the power tool can cause serious injury.
- f. If devices are used for dust extraction/collection, make sure they are properly connected. Use these devices to reduce dust related hazards.

4) Use and care of power tools

- a. Do not force the tool. Use the correct power tool for each use.
- b. Do not use the power tool if its power switch does not work. Any power tool that cannot be controlled with the switch is dangerous and must be repaired.
- c. Use the power tool, accessories and bits etc. in accordance with these instructions, taking into account the working conditions and the work to be carried out. Using this power tool for other than its intended use could result in a hazardous situation.
- d. Store power tools out of the reach of children and do not allow people unfamiliar with the tool to use it.
- e. Keep power tools in good condition. Check for misalignment or binding of moving parts, breakage of parts, and any other condition that may affect the operation of power tools. If it is damaged, have the power tool repaired before using it. Many accidents are caused by poorly maintained power tools.

5) Battery use and care

- a) Recharge the battery only with the charger specified by the manufacturer. An unsuitable charger can create a fire hazard.
- b) Use specifically designated batteries. Use of other batteries may create a risk of injury or fire.
- c) When the batteries are not in use, please keep it away from other metal objects. Shorting the battery terminals can cause burns or fire.
- d) Abusive conditions can cause expulsion of liquid from the battery; avoid contact. If accidentally contacted, rinse immediately with water. If the liquid comes into contact with the eyes, also seek medical help. Liquid expelled from the battery can cause irritation or burns.
- e) Do not use a battery or tool that is damaged or modified. They may exhibit unpredictable behavior resulting in fire, explosion, or risk of injury.
- f) Do not expose a battery or tool to fire or excessive heat. Exposure to fire or temperature above 130°C may cause an explosion.
- g) Follow all charging instructions. Do not charge the battery or tool outside the temperature range specified in the instructions. Improper charging or charging at temperatures outside the specified range may damage the battery or increase the risk of fire.

6) Service

- a. Have your power tool serviced by a qualified person and use replacement parts recommended by the manufacturer. This will ensure that the safety of the power tool is maintained.

Safety rules for correct use



Double insulation for additional protection



Please read the instruction manual before use.



CE conformity.



Wear safety glasses, hearing protection and a dust mask.



Lock, tighten or secure / unlock or loosen.



Wear suitable protective and non-slip footwear.



Wear safety gloves.



Turn off the product and disconnect it from the power source before assembly, cleaning, adjustments, maintenance, storage and transportation.



Waste electrical products must not be disposed of with household waste. Please recycle at the appropriate facilities. Check with your local authority or retailer for recycling advice.



Security alert. Use only accessories supported by the manufacturer.



Charge the battery only below 40°C



Always recycle batteries



Do not expose the battery to fire or high temperatures



Do not expose battery to water

Additional security warnings

- Please read the manual carefully and be aware of its applications and limitations, as well as the specific potential hazards associated with this power tool. Compliance with this rule will reduce the risk of electric shock or serious injury.
- Always wear suitable eye protection. Everyday glasses are not safety glasses. Compliance with this rule will reduce the risk of serious personal injury.

- In some environments additional security protection will be required. For example, the work area may include exposure to a noise level that can cause hearing damage.
- You must wear a dust mask, non-slip safety shoes, hard hat or hearing protection in the appropriate conditions.
The user must ensure that the operator and other people present in the work area have and use the necessary protection for correct use.
- Battery tools do not have to be plugged into an outlet, so they are always in working condition. Be aware of possible hazards when not using your battery tool or when changing accessories. Compliance with this standard will reduce the risk of electric shock, fire, or serious personal injury.
- Do not place battery tools or their batteries near fire or heat. This will reduce the risk of explosion and possible injury.
- Use the tool only for its intended use. Do not alter or modify this tool from its original design or function.
- Always keep in mind that misuse and improper handling of this tool can cause injury to yourself and others.
- Never leave the tool unattended if the battery is installed.
- Keep the tool and its handle dry, clean and free of oil or grease. Always use a clean cloth for cleaning. Never use brake fluid, gasoline, petroleum products, or any other strong solvents to clean the tool. Compliance with this standard will reduce the risk of loss of control and deterioration of the plastic of the housing.

Start up

- Do not use tool if trigger does not actuate properly. Any tool that cannot be controlled with the trigger is dangerous and must be repaired.
- Do not use a tool that is not working properly.
- Always handle the tool with care:
 - Respect the tool as a work instrument.
 - Never pull the trigger unless attention is directed to the work.
 - Keep others at a safe distance from the tool while it is in operation, as accidental operation could result and could cause injury.

Save these instructions

- Please refer to them frequently and use them to educate others who may use this tool. If you lend someone this tool, please lend them these instructions as well.
- This manual contains important safety and operating instructions. Before using the tool and/or charger, read all instructions and caution symbols.

Battery Pack Warnings

- Shock hazard. Do not allow any liquid to enter the charger. It may result in an electric shock.
- We recommend the use of a residual current device with a residual current rating of 30mA or less.
- Burning danger. To reduce the risk of injury, charge only rechargeable batteries. Other types of batteries can explode and cause personal injury and damage.
- Under certain conditions, with the charger plugged into the power source, the exposed charging contacts inside the charger may be shorted by some conductive foreign material such as steel wool, aluminum foil, or any accumulation of metallic particles should be kept away from the magazine cavities. Always unplug the charger from the power source when there is no battery pack in the cavity. Unplug charger before cleaning.

- Do not attempt to charge the battery pack with other chargers that are not approved by the manufacturer. The charger and battery pack are specifically designed to work together.
- These chargers are not intended for any use other than charging rechargeable batteries. Any other use may result in a risk of fire, electric shock, or electrocution.
- Do not expose the charger to rain or snow.
- Pull on the plug instead of the cord when unplugging the charger. This will reduce the risk of damaging the plug and power cord. Make sure the cord is located so that it will not be stepped on, tripped over, or subjected to damage or stress. Do not use an extension cord unless absolutely necessary. Use of an improper extension cord could result in a risk of fire, electric shock, or electrocution.
- Do not place any objects on top of the charger or place the charger on a soft surface that may block the vents or slots and cause excessive internal heat. Place the charger in a position away from any heat source. The charger is ventilated through slots at the top and bottom of the case.
- Do not use the charger if the cable or plug is damaged; replace them immediately.
- Do not use the charger if it has received a sharp blow, been dropped, or otherwise damaged. Take it to an authorized service center.
- Do not disassemble the charger; take it to an authorized service center when service or repair is required. Improper reassembly can result in a risk of electric shock, electrocution, or fire.
- In the event that the power cord is damaged, the power cord must be replaced immediately by the manufacturer, its service agent, or a similarly qualified person in order to avoid any hazard.
- Unplug the charger from the wall outlet before attempting any cleaning. This will reduce the risk of electric shock. Removing the battery will not reduce this risk.
- Declaration and verification of noise emission values.
 1. Noise emission value L (LpA, LpCpeak and LwA)
LPA: 81dB(A)
LWA: 92dB(A)
 2. Respective uncertainty K (KpA, KpCpeak and KwA):
KPA: 3dB
KWA :3dB
 3. Recommendation on protection.
 4. Vibration level: Indicates <math><2.5\text{ m/s}^2</math> or provides a value.

Other risks

Even when the power tool is used as prescribed, it is not possible to eliminate all residual risk factors:

- a. Health defects resulting from vibration emission if the power tool is used for a longer period of time or if it is not managed and maintained properly.
- b. Injuries and property damage due to broken fixtures breaking suddenly.



Caution

This power tool produces an electromagnetic field during operation. This field can, in some circumstances, interfere with active or passive medical implants.



To reduce the risk of serious injury, we recommend that persons with medical implants consult their physician before using this power tool.

The machine must not be damp and must not be used in a humid environment.



Attention

Safe operation of this machine is only possible when the operating or safety information is fully read and the instructions contained therein are strictly followed.



Technical data

Data sheet	
Voltage	20V
Battery type	Li Ion
No load speed	500-2800/min
Pad size	Ø150mm
Output shaft	M14

Product description

1. Spindle lock button
2. On/off switch
3. Digital display
4. Speed deduction button
5. Speed increase button



Note: Not all accessories illustrated or described may not be included in the standard delivery.

Note 2: Double insulation: The tool is double insulated. This means that all external metal parts are electrically isolated from the mains. This is done by placing isolation barriers between electrical and mechanical components, making it unnecessary to ground the tool.

Set up

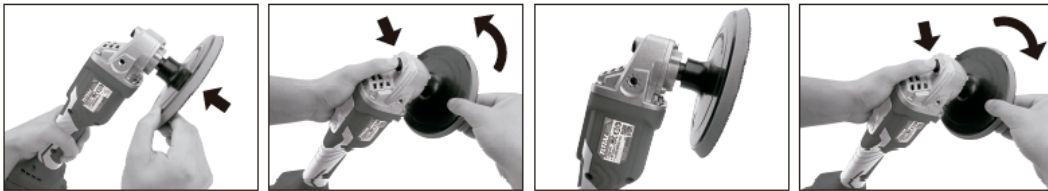


Caution

Never engage the spindle lock when the spindle is moving. The tool could be damaged.

Installation or removal of the disk

- Remove any dirt or foreign matter from the pad.
- Press the spindle lock to prevent spindle rotation during installation.
- Screw the pad onto the shaft.
- Screw the pad off the spindle.



Mounting and releasing the battery pack

- With the battery charged, mount the battery pack to the tool (Fig.1).
- Press down button 7 and then pull out the battery pack from the main body of the machine.



Fig.1

Turning the machine on and off

- **To turn on the machine:** Press the on/off button (2) to the "I" position to start the machine. The LCD display shows "00".
- **To turn off the machine:** Press the button to the off position ("O" position) and the machine will turn off.



Fig.2

Speed adjustment

- **speed up:** Press the speed increase button (5) after turning on the machine. The LCD display shows the numbers 05, 08, 15, 20, 25, 30 when you press the button, which means speed steps of 500rpm, 800rpm, 1500rpm, 2500rpm, 3000rpm relatively.
- **slow down:** Press the speed down button (4) after turning on the machine and when the speed of the machine is higher than 500 rpm. The LCD display shows numbers of 05, 08, 15, 20, 25, 30 when you press the button, which means the speed steps of 500rpm, 800rpm, 1500rpm, 2500rpm, 3000rpm are relatively.



LCD screen instructions: speed selection

speed selections			
Speed	Numbers displayed on the screen	Indicated speed	Observation
0	00	no speed	Switched on
1	05	500±10%	
2	08	800±10%	
3	10	1000±10%	
4	15	1500±10%	
5	20	2000±10%	
6	25	2500±10%	
7	30	2800-10%	the highest speed

Maintenance and troubleshooting

Errors displayed Instruction		
Mistake	possible reasons	Solutions
E1	Overload protection: 1. Overloaded (working electric current more than $50A \pm 4A \leq 500mS$) 2. The machine is damaged.	1. Power off the machine. 2. Reboot the machine 3. If the above 2 actions do not work, please contact your official dealer.
E3	Misfire Protection: 1. Some external reason makes the motor not work 2. The machine is damaged.	
E4	Block Twist Protection: 1. Overloaded 2. The machine is damaged.	
E5	Overheat protection: the machine works under high load for a long time. And the temperature reached over $100^{\circ}C$, causing the machine to stop working.	Turn off the machine and cool down the machine for 0.5h. The machine can be turned on again when the temperature drops below $60^{\circ}C$.
E6	Lack of voltage protection: the volume of electricity load is too less than $14V \pm 0.5V$.	Charge the battery and use the fully charged battery.
E7	Hardware protection: machine failure	1. Power off the machine. 2. Reboot the machine 3. If the above 2 actions do not work, please contact your official dealer.
E8	Motor protection: machine breakdown.	
E9	Over voltage protection: battery voltage greater than 30V.	1. Check the battery voltage is normal or not. Must be $\leq 21V$ 2. Use the qualified battery.

Note: If after checking these recommendations it does not work, take it to the Total authorized service center.

Maintenance

Caveat



Remember to turn off the tool and disconnect the battery before making any adjustments, cleaning, consultation or maintenance. Unintentional machine operation can cause serious injury.

- Protect the tool from impacts, bumps and grease.
- Always keep the tool and charger cable clean (especially the ventilation slots).
- Disconnect battery before cleaning. Do not try to clean the ventilation slots by inserting pointed objects through the openings.

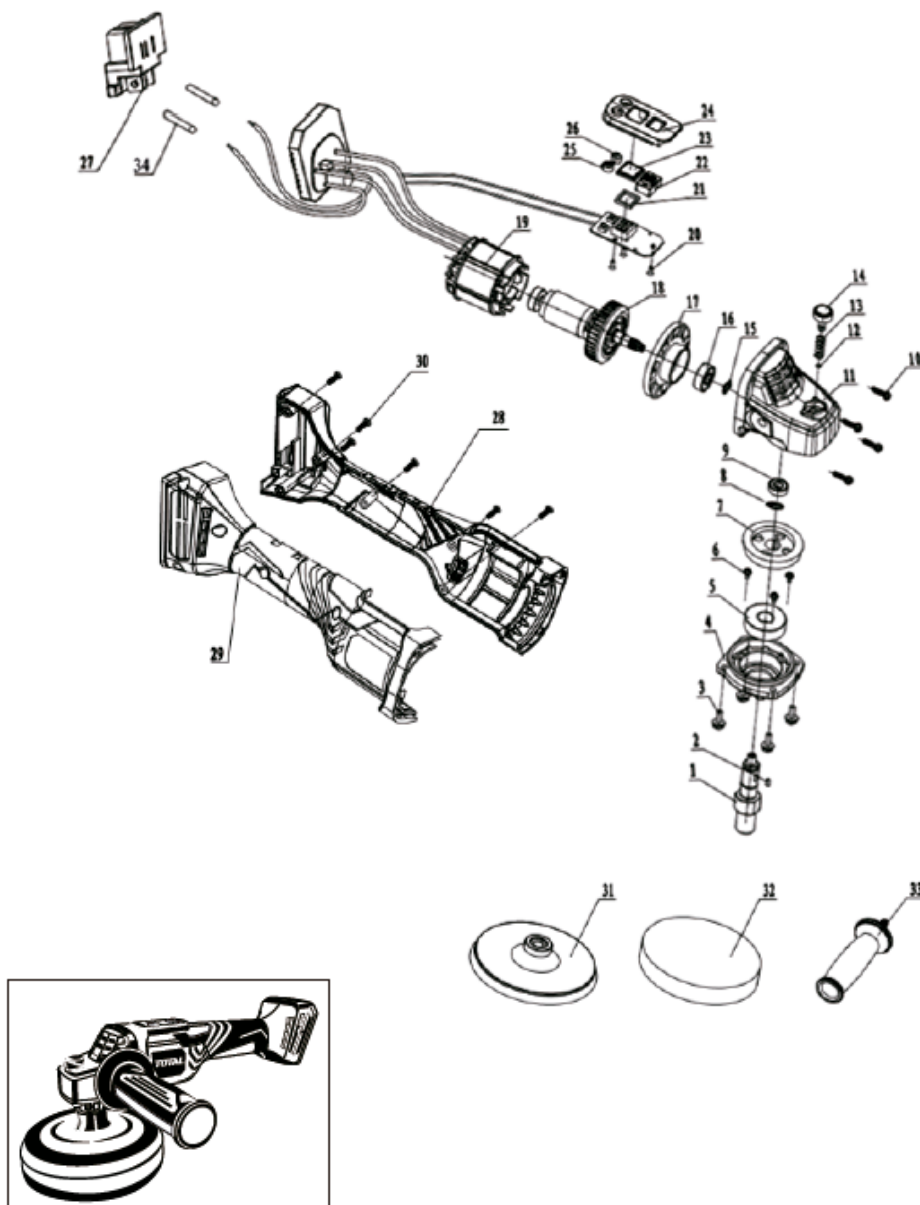
Environment



- Do not dispose of electrical appliances as unsorted municipal waste, use separate collection facilities.
- Contact your local authority for information on available collection systems.

- If electrical appliances are disposed of in landfills, hazardous substances can seep into the groundwater and enter the food chain, harming your health and well-being.
- Recycle raw materials instead of disposing of them as waste.
- The machine, accessories and packaging must be sorted for environmentally friendly recycling.
- Plastic components are labeled for categorized recycling.

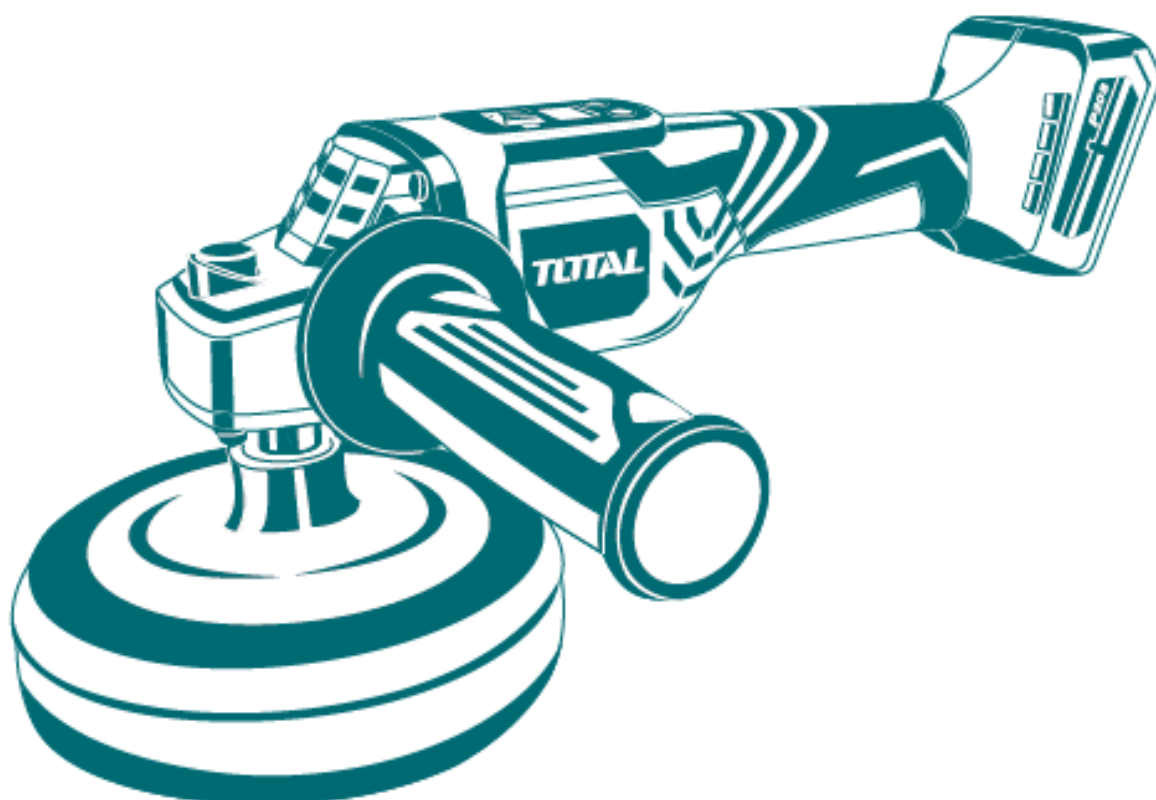
Exploded view



TOTAL

One-Stop Tools Station

TOTAL



BATTERY POLISHER

20V