

TOTAL

One-Stop Tools Station

TOTAL

BATTERY BLOWER

TABLI20428

INDUSTRIAL



EN



20V

Security instructions



Caveat

Read all safety warnings and all instructions. Failure to follow warnings and instructions may result in battery discharge, fire, and/or serious injury.

Save all warnings and instructions for future reference.

Note: The term "battery tool" in the warnings refers to your battery-operated (cordless) battery tool. Due to technical product updates, this document is subject to change without notice.

1) Work area safety

- a. Keep the work area clean and well lit to prevent accidents.
- b. Do not use battery tools in explosive atmospheres, such as in the presence of flammable liquids, gases, or dust that can cause fires.
- c. Keep children and other unauthorized persons away while using a battery tool. Distractions can cause you to lose control of the tool.

2) Electrical safety

- a. The plugs for charging the battery of the P20S tools must match the outlet. Never modify the plug in any way. Using a suitable plug reduces the risk of electric shock.
- b. Avoid bodily contact with grounded surfaces such as pipes, radiators, ranges, and refrigerators. There is an increased risk of electric shock if your body is grounded.
- c. Do not expose battery tools to rain or wet conditions. Water entering a battery tool will increase the risk of electric shock.
- d. Never use the cable to carry, pull or unplug the battery charger. Keep the cable away from heat or oil.
- e. If using the tool in a wet location is unavoidable, use a Residual Current Device (RCD) protected supply to reduce the risk of electric shock when charging the battery.

3) Personal security

- a. Always stay alert, watch what you are doing and use common sense when using the tool.
- b. Do not use a battery tool if you are tired or under the influence of medication or other substances.
- c. Wear personal protective equipment. Always wear eye protection. Protective equipment such as a dust mask, non-slip safety shoes, hard hat, or hearing protection used in the proper conditions will reduce personal injury. Also don't wear loose clothing or jewelry.
- d. Prevent the tool from turning on unintentionally. Make sure the switch is in the off position before connecting to battery or moving.
- e. If devices are used for dust extraction and collection, make sure they are properly connected. Properly use these devices and you will reduce dust-related hazards.
- f. Don't overdo it. Maintain posture and balance at all times. This allows for better control of the power tool in unexpected situations.

4) Use and care of battery tools

- a. Do not force the tool. Use the right battery tool for each use.
- b. Do not use the battery tool if its power switch does not work. Any battery tool that cannot be controlled with the switch is dangerous and must be repaired.
- c. Disconnect the battery before making any adjustments, changing accessories, or storing the tool to avoid accidental starting.
- d. Use the battery tool, accessories and bits etc. in accordance with these instructions, taking into account the working conditions and the work to be carried out. Using the battery tool for operations other than its intended purpose could result in a dangerous situation.
- e. Store battery tools out of the reach of children and do not allow people unfamiliar with the tool to use it.
- f. Carry out regular maintenance on battery tools. Check for misalignment or binding of moving parts, breakage of parts, and any other conditions that may affect the operation of battery tools. If it is damaged, have the battery tool repaired before using it. Many accidents are caused by poorly maintained battery tools.
- g. Keep accessories clean and sharp, as with proper maintenance they are less likely to bind and are easier to control.

5) Service

- a. Have your battery tool serviced by a qualified person and use replacement parts recommended by the manufacturer. This will ensure the safety of the battery tool is maintained.

Safety rules for correct use



Please read the instruction manual before using the machine.



Wear eye protection



Wear suitable protective gloves.



Wear ear protection



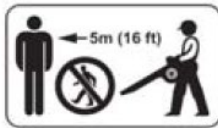
Wear non-slip protective footwear.



Do not use it in the rain or leave it outdoors while it is raining.



Keep bystanders away



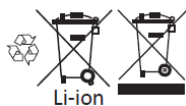
The distance between the machine and bystanders must be at least 5m.



Power off and remove battery before adjusting and cleaning.



Waste electrical products must not be disposed of with household waste. Please recycle at the appropriate facilities. Check with your local authority or retailer for recycling advice.



This product should be disposed of at an appropriate recycling facility.



Failsafe transformer.



Use and store the battery charger indoors only.

Additional security warnings

Do not allow people with a lack of experience and knowledge to use tools, unless they have been supervised or instructed on the use of the appliance by a person responsible for their safety. Children must not use the tool.

Before using

- Please read the instructions carefully. Become familiar with the controls and the proper use of the blower.
- Never allow people unfamiliar with these instructions to use the appliance.
- Never use the tool if there are people in the work area, especially children or pets.
- The user is responsible for accidents or dangers that other people or their property may suffer while using the tool.

Preparation

- Get hearing protection and safety glasses. Wear them at all times while using the machine.
- While using the blower, always wear sturdy shoes and long pants. Do not use the equipment barefoot or with open sandals.
- Do not wear loose clothing or jewelry that may enter the air intake. Keep long hair away from air intakes.
- To avoid irritation from inhalation of dust, the use of a mask is recommended.
- Never use the tool without guards or with defective guards.
- Before using the tool, always visually inspect to see that grinding media, bolts, and other items are secure, housing is not damaged, and guards and screens are in place. Replace worn or damaged components in sets to preserve balance. Replace damaged or unreadable labels.

Start up

- Keep your face and body away from the blower inlet opening.
- Do not allow hands or any other body part, including clothing, to enter the feed chamber, discharge chute, or near any moving parts.
- Keep your balance and your feet in a firm position at all times. Never stand higher than the base of the machine when feeding material into the machine.
- Always stay clear of the discharge area when operating this machine.
- When feeding material into the machine, be very careful that no metal parts, stones, bottles, cans, or other similar objects are included.
- If the cutting mechanism hits any foreign object or if the machine starts to make unusual noises or vibrations, turn off the power immediately and allow the machine to stop. Disconnect the machine from the supply and follow the steps below before restarting and operating the machine:
 - Inspect damage.
 - Replace or repair any damaged part.
 - Check and tighten loose parts.
- Do not allow processed material to accumulate in the discharge area; this may prevent proper discharge and may cause material to back up through the inlet opening.

- If the machine becomes clogged, turn off the power supply and disconnect the machine from the supply before cleaning the debris.
- Never use the machine with faulty guards or without safety devices.

Other warnings and risks

- Keep the power supply clean of debris and other buildup to prevent damage to the power supply or possible fire.
- Do not carry this machine while the power supply is on.
- Stop the machine and remove the plug from the socket. Make sure all moving parts have come to a complete stop:
 - As long as it comes out of the machine.
 - Before clearing obstructions or unclogging the duct.
 - Before checking, cleaning or working on the machine
- Do not leave the machine while the power supply is working.
- Recharge only with the charger specified by Total. Do not use any charger other than the one provided specifically for use with the equipment. Otherwise, you may create a fire hazard.
- Keep the battery pack out of the reach of children.
- Please retain the original product documentation for future reference.
- Remove the battery from the equipment when not in use.

Maintenance and storage

- When the machine is stopped for maintenance, inspection or storage, or to change an accessory, turn off the power supply, disconnect the machine from the supply and make sure that all moving parts come to a complete stop.
- Let the machine cool down before making any inspections, adjustments, or even putting it away.
- Please use the machine carefully and keep it clean.
- Store the machine in a dry place out of reach of children.
- Make sure the battery is unplugged from the machine.
- Replace worn or damaged parts for safety. Use only original spare parts and accessories.
- Never try to defeat the function of the protector.



Attention

Safe operation of this machine is only possible when the operating or safety information is fully read and the instructions contained therein are strictly followed.



Technical data

Technical sheet of the battery-powered blower	
Voltage	20V
No load speed	18500rpm
Blow speed	40m/s
Air capacity	8.5m ³ /min

Note: Voltage measured without work load. The initial battery voltage reaches a maximum of 20 volts. The nominal voltage is 18 volts.

Noise and vibration information	
Sound power level, dB (A):	96.62
Sound pressure level, dB (A):	84.53
Vibration levels in the handles: <i>[Measured according to EN ISO 8662-1]</i>	1,266m/s ² k= 1.5m/s ²



Caution

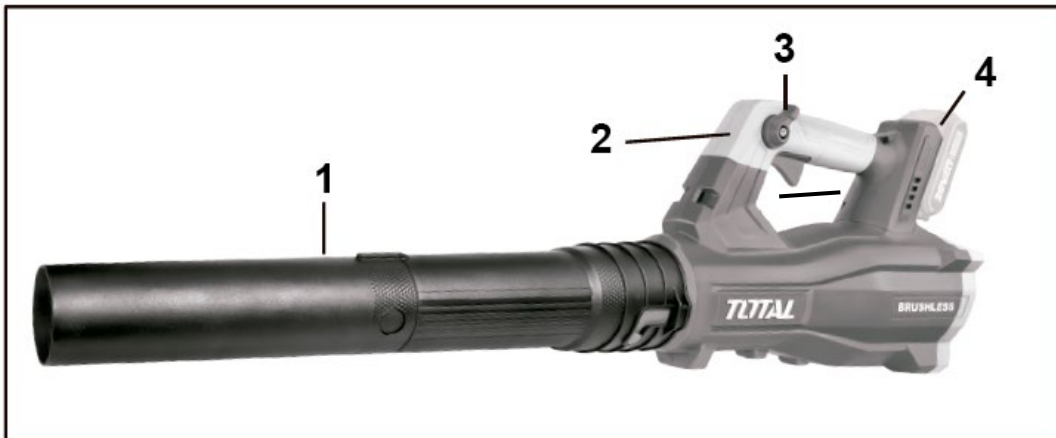
The vibration emission value during actual use of the power tool may differ from the declared value depending on the ways the tool is used, according to the following examples and other variations:

- How the tool is used.
- The tool is in good condition and well maintained.
- Use the correct accessory for the tool and make sure it is in good condition.
- The strength of the grip on the handles and any vibration on the accessories are used.
- The tool is being used as intended by its design and these instructions.
- This tool can cause hand-arm vibration syndrome if its use is not managed properly.

Product description

1. Blower tube
2. Trigger switch

3. Control handle
4. Battery (not included)



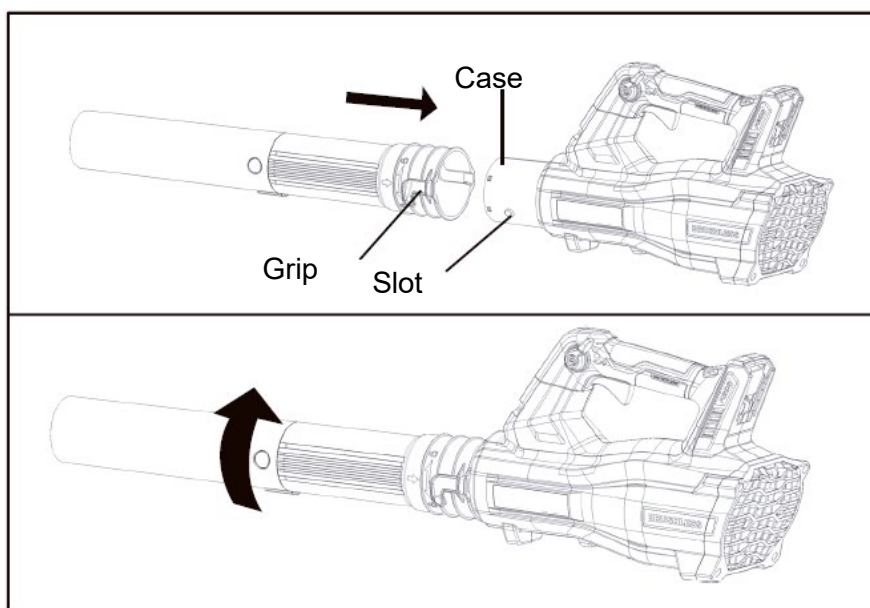
Note: Safe use of this product requires an understanding of the product information in this user manual, as well as knowledge of the project you are performing. Before using this product, familiarize yourself with all operating features and safety regulations.

Note 2: Not all accessories illustrated or described in this manual need to be included in the standard delivery.

Assembly and commissioning

Blower Tube Assembly

Always remove the battery pack before assembling the fan tube.



- Align the grip and the groove.
- Push the blower tube into the housing.
- Rotate the blower tube counterclockwise.

Start up

Remove and install the battery

- Press the battery release button to release the battery from your tool.
- After recharging, insert the battery into the battery port of the tool. A simple push and light pressure will suffice.



Turning the blower on and off



Switched on

- Hold the blower with one hand on the control handle.
- Put your hand around the handle/handle.
- Squeeze the trigger with your index finger and hold it there. You will notice the blower speed up and air coming out of the nozzle.

Off

- Variable speed trigger release
- Check that no air flows from the nozzle.

Using the blower

Hold and control the blower

- Hold and control the blower with one hand on the control handle or handle.
- Put your hand around the handle/handle.
- Point the nozzle at the ground, walk slowly and steadily forward.

Maintenance and cleaning

Maintenance

To avoid the risk of fire, electric shock, or electrocution:

- Do not use a damp cloth or detergent on the battery or battery charger.
- Always remove the battery pack before cleaning, inspecting or performing any maintenance.

Cleaning

- Clean the outside of the blower with a soft, dry cloth. Do not wash with water.
- Brush or blow dust, debris, and grass clippings out of vents. Keep them free from obstructions

Batteries

- Keep the battery fully charged.
- Do not store battery in tool or charger.
- After charging, the battery can be stored in the charger, as long as the charger is not plugged in.

Charger maintenance

- Keep the charger clean and free of debris.
- Do not allow foreign material to enter the cavity or the contacts.
- Clean the charger with a dry cloth. Do not use solvents or water, and do not place the charger in wet conditions.
- Please unplug the charger when you have no battery.
- Fully charge the batteries before storing them.
- Store the charger at normal room temperature. Do not store in excessive heat.
- Do not use the charger in direct sunlight. Recharge at room temperature between 5°C and 40°C (41°F and 104°F). If the battery is hot, let it cool down before recharging.

Problem solving

From battery charger during charging

LED indicator	possible mistake	Possible solution
flashing red LED	temperature deviation	Use the battery charger only when the ambient temperature is between 5°C and 44°C
red LED on		Contact your service agent

From the blower during operation

Problem	possible mistake	Possible solution
Blower run time is too short	The battery is not fully charged	Fully charge the battery

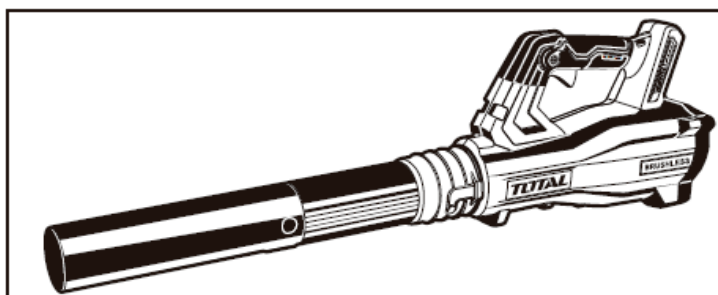
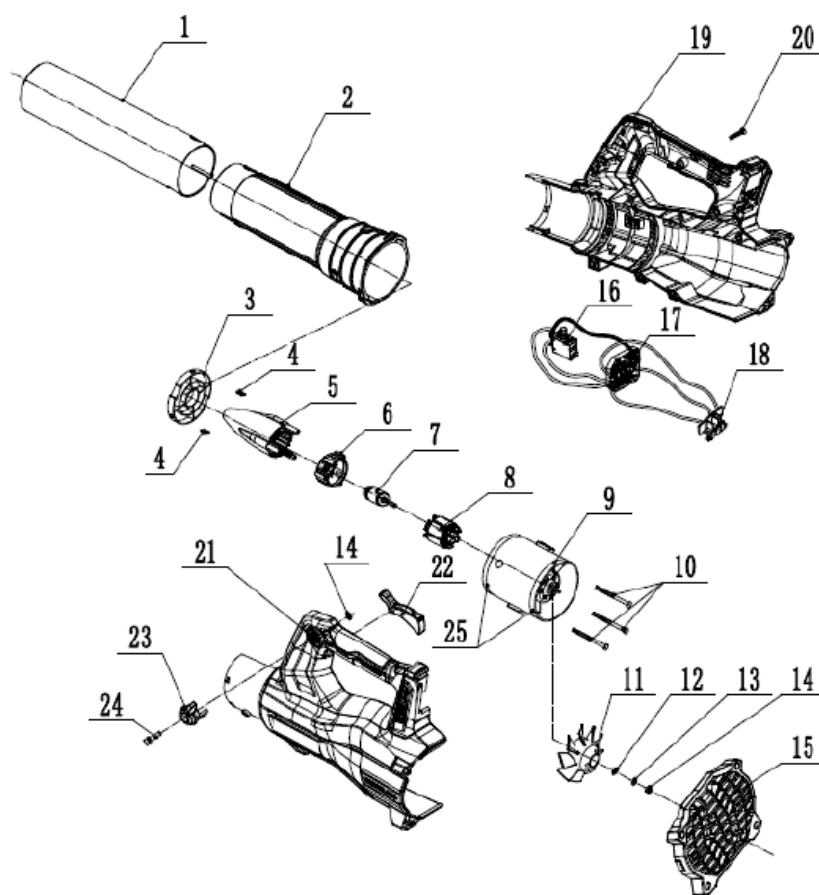
Note: If you still cannot get your tool to work, please contact your service agent.

Environment



- Do not dispose of electrical appliances as unsorted municipal waste, use separate collection facilities.
- Contact your local authority for information on available collection systems.
- If electrical appliances are disposed of in landfills, hazardous substances can seep into the groundwater and enter the food chain, harming your health and well-being.
- Recycle raw materials instead of disposing of them as waste.
- The machine, accessories and packaging must be sorted for environmentally friendly recycling.
- Plastic components are labeled for categorized recycling.

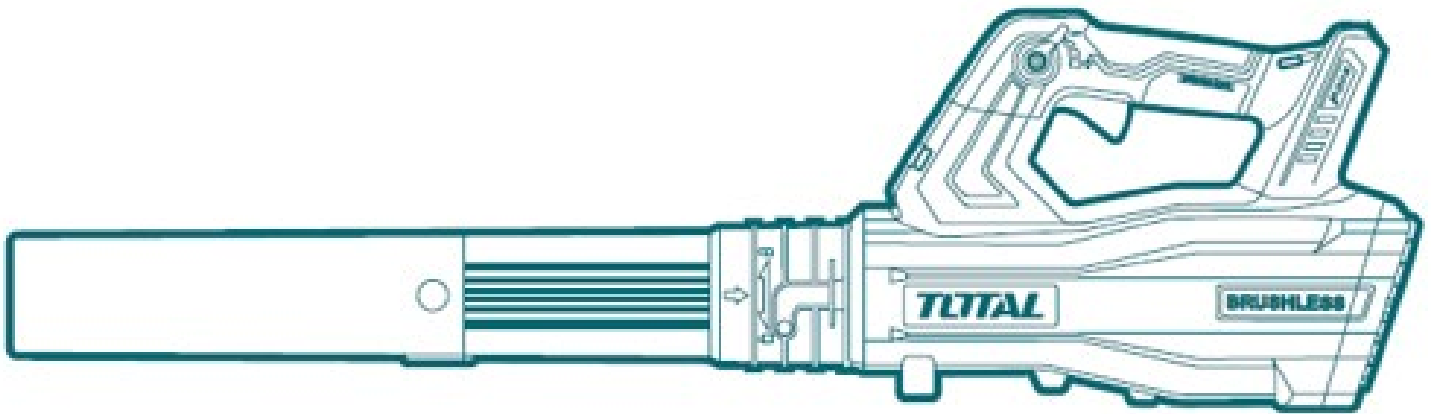
Exploded view



TOTAL

One-Stop Tools Station

TOTAL



BATTERY BLOWER

20V